



Using PCoIP® Zero Clients with PCoIP Host Cards

TECHNICAL NOTES



Table of Contents

Preface	3
Additional Support	3
1 PCoIP Configuration Tools	4
1.1 Web Interface	4
1.2 Zero Client Onscreen Display (OSD)	5
1.3 PCoIP Management Console	6
2 Firmware	7
3 Network Considerations	7
3.1 Session Bandwidth	7
3.1.1 Device Bandwidth Target	8
3.1.2 Device Bandwidth Floor	9
3.1.3 Device Bandwidth Limit	9
3.2 Image Quality and Bandwidth Management	10
3.2.1 Minimum Image Quality	10
3.2.2 Maximum Initial Image Quality	11
3.3 Latency	11
3.4 Packet Loss	12
3.5 Packet Reordering	12
3.6 Auto-Discovery and Subnets	12
3.7 Temporal Dithering	15
4 IP Addresses	15
4.1 DHCP	15
4.2 Determining IP Addresses	15
5 Connection Problems	18
6 Video	18
6.1 Monitor and Graphics Card Compatibility	18
6.2 Client Does Not Display Desktop – “Source Signal on Other Port”	19
6.3 Temporal Dithering	19
7 Audio	19
8 WAN Support	20
8.1 Local Keyboard and Mouse Host Agent	20
8.2 VPN Connectivity	20
9 Frequently Asked Questions	21

Preface

This document provides guidelines for configuring, troubleshooting, and optimizing 1:1 (non-virtualized) remote computing using PCoIP host cards and PCoIP zero clients. Topics include:

- PCoIP Configuration Tools (Web interface, onscreen display, and Management Console)
- Firmware versions
- Network considerations and bandwidth management
- IP addresses
- Connection problems
- Video and audio issues
- WAN and VPN connectivity

Note: VMware® View™ is now capable of brokering 1:1 remote workstation sessions between PCoIP host cards and zero clients. Virtually all the information in this guide, including that on configuration tools, bandwidth and image quality, connection problems, video, audio, and WAN, also applies to 1:1 remote sessions brokered by VMware View. The key differences are that in a VMware View environment, the View Agent must be installed on the host machine, and VMware View serves as the connection broker, so host-client connections (and associated information, such as IP addresses) are configured in View rather than via Teradici configuration tools.

Note: The specifications are subject to change without notice.

Additional Support

Your PCoIP solution vendor should be your first contact for PCoIP support and information.

Teradici manages a support site (<https://www.support.teradici.com>) that provides documentation, a [knowledge base](#), and [downloads](#) of Teradici firmware and software. The following detailed documents are available in the Documentation section of the Teradici support site.

- PCoIP Desktop System Quick Start Guide (TER0809002)
- PCoIP Administrative Interface User Manual (TER0606004)
- PCoIP VPN Deployment Guide (TER0902002)
- PCoIP User Guide (TER0806003)
- Using PCoIP Host Cards Brokered by VMware View 4 (TER0911004)

You will require a user name and password to access the Teradici support site. Contact support@teradici.com to request access to the support site.

1 PCoIP Configuration Tools

Several of the recommendations in this guide, such as configuring PCoIP bandwidth utilization and image quality, determining IP addresses, assigning connections, and updating PCoIP firmware, are accomplished via the PCoIP Web interface, zero client onscreen display (OSD) and/or Management Console. These tools are introduced below.

1.1 Web Interface

Every PCoIP host card and zero client provides a Web-based interface that allows you to view or modify configuration settings, update firmware, set USB authorization, view event logs, and perform other common management tasks. To access the Web interface, navigate to the PCoIP zero client or host card IP address through a Web browser. Obtaining PCoIP device IP addresses is discussed in Section 4.2. Note that if PCoIP management passwords have been configured, you will require the password to log in to the Web interface.

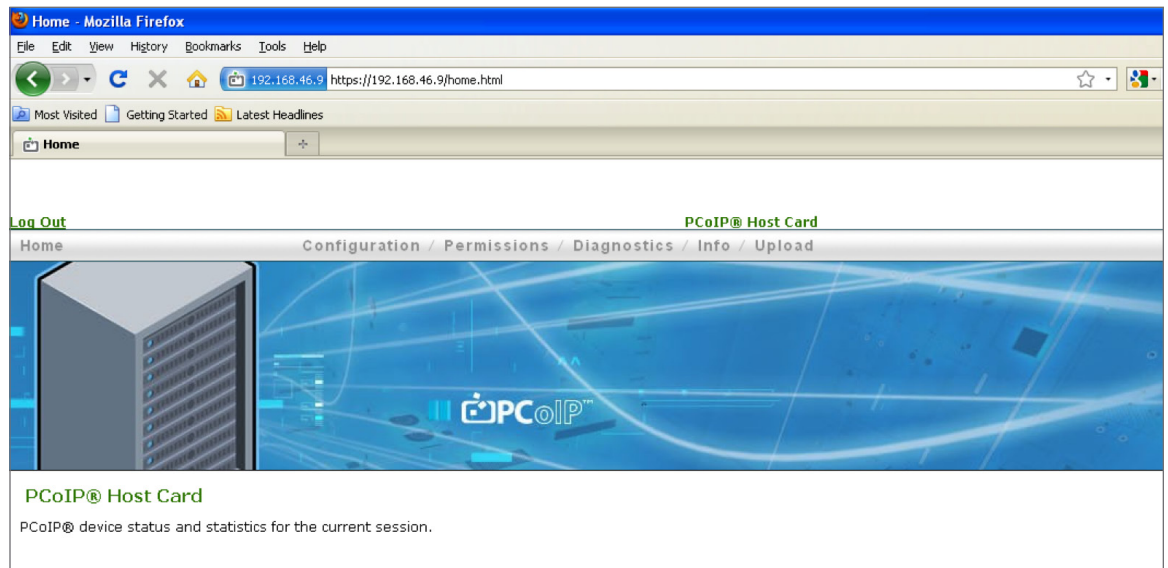


Figure 1: The PCoIP host card Web interface

1.2 Zero Client Onscreen Display (OSD)

Every PCoIP zero client (including PCoIP integrated monitors) provides an onscreen display (OSD) that allows you to view or modify certain PCoIP zero client configuration and network settings. To access the client OSD, disconnect the client from its PCoIP session (or power it on) and use the mouse to access the Options menu at the top left of the Connect screen. Note that PCoIP host cards have no OSD equivalent.



Figure 2: Options menu to access OSD from zero client Connect screen

1.3 PCoIP Management Console

For managing larger deployments of PCoIP host cards and/or clients, Teradici offers the PCoIP Management Console. This is a Web-based tool that allows administrators to:

- View and update device configuration
- Update firmware
- Group devices (e.g., by function or location)
- Configure and view static host-client connections
- View device log files
- Control the power state of host cards
- Reset devices

The PCoIP Management Console is available from PCoIP solution vendors and from the download section of the Teradici support site.

The screenshot displays the Teradici PCoIP Management Console interface. The browser window title is "Teradici PCoIP Management Console - Mozilla Firefox" and the address bar shows "https://192.168.46.103/DeviceMgr.php". The navigation menu includes HOME, DEVICES (highlighted), GROUPS, PROFILES, POWER, UPDATE, SETTINGS, LOGOUT, and HELP. The main content area is titled "Device Management" and contains a "Link Devices" button. Below this, there are two columns: "HOSTS (deselect)" and "PORTALS (deselect)". Each column lists IP addresses and their group status. The "HOSTS" column includes IP addresses like 192.168.46.8, 192.168.50.185, 192.168.46.27, 192.168.46.35, Not Available, 192.168.42.33, 192.168.46.7, 192.168.46.13, 192.168.46.24, 192.168.46.40, 192.168.46.42, 192.168.50.9, 192.168.50.20, 192.168.50.70, and 192.168.50.112. The "PORTALS" column includes IP addresses like 192.168.50.95, 192.168.50.108, 192.168.50.184, 192.168.50.40, 192.168.50.44, 192.168.50.52, 192.168.50.54, 192.168.50.57, 192.168.50.67, 192.168.50.71, 192.168.50.73, 192.168.50.76, 192.168.50.87, 192.168.50.93, 192.168.50.110, and 192.168.50.130. A "Legend" panel on the right includes an "Update" section with an "Update All" button, a "Filter" section with a text input and "Clear" button, and a "Grouping" section with dropdowns for "Field", "Peerings", "Groups", and "Status", and a "Device Password" field. The footer contains the text "Teradici and PCoIP are registered trademarks of Teradici Corporation. © Copyright 2009 Teradici Corporation." and links for "License Agreement", "Support", and "Teradici.com".

Figure 3: PCoIP Management Console Device Management screen

2 Firmware

- The latest Tera1 firmware (version 3.1 or later) is recommended unless you are connecting to a Linux host over a high-latency WAN (see below). Firmware 3.1 or later is compatible with both VMware and non-VMware environments.
- All PCoIP devices in VMware-brokered environments require firmware 3.1 or later and VMware View agent 4.0.1 or later.
- For 1:1 connections to Linux host PCs over high-latency WAN connections that require the PCoIP local keyboard and mouse agent (see Section 8.1), firmware 2.3 is recommended. The Linux version of the PCoIP agent will be updated to support firmware 3.x in the future.
- Both the PCoIP host card and client must be at the same firmware level.
- Firmware is available from PCoIP solution vendors or from the download section of the Teradici support site. A firmware upgrade is performed via the Web interface or Management Console (see Section 1). Refer to the documentation included with the firmware for details.

3 Network Considerations

3.1 Session Bandwidth

PCoIP 1:1 remoting hardware requires a minimum peak bandwidth of approximately 1Mbps¹. The actual peak bandwidth required to deliver a satisfactory desktop experience will depend on the application, graphics, network, monitor configuration, and user expectations. Peak bandwidth is the bandwidth required to deliver major screen updates quickly. Average bandwidth utilization is typically much lower. The PCoIP protocol can be used over lower bandwidth networks, but the user experience will be impacted as bandwidth decreases.

The PCoIP protocol allows specification of three parameters that control bandwidth utilization. These are accessed via Configuration ⇒ Bandwidth on the Web interface and discussed in later sections.

¹. The bandwidth requirements for remote computing with a PCoIP host card are not the same as when using a VMware View 4 virtual desktop host. See Using PCoIP Zero Clients with VMware View 4 (TER0904005).



Figure 4: PCoIP host card Web interface showing bandwidth configuration screen

Note: In order to minimize the impact of new remote sessions on the network, the PCoIP protocol initiates sessions at reduced bandwidth and increases bandwidth utilization over the first few seconds. For this reason, you may briefly see low-bandwidth video artifacts in a new session until bandwidth utilization ramps up.

3.1.1 Device Bandwidth Target

When a PCoIP session experiences packet loss, the PCoIP protocol scales back bandwidth utilization rapidly to the *Device Bandwidth Target*, and more slowly below this value. This provides a more even distribution of bandwidth between users sharing a congested network.

The recommended *Device Bandwidth Target* is 0 (zero), which disables the target bandwidth feature. If you discover that active PCoIP sessions on the same network are consistently receiving unequal shares of the network's bandwidth (e.g., some users are happy with their desktop experience while others are not), consider the following configuration:

Device Bandwidth Target = 80% x (Network Bandwidth / Number of Users), provided this bandwidth is at least 1,000 kbps.

For example, if four similar users are sharing a 100 Mbps link, set the *Device Bandwidth Target* to

Device Bandwidth Target = (0.8 x 100,000 / 4) = 0.8 x 25,000 = 20,000 kbps

From this starting point, adjust *Device Bandwidth Target*, if necessary based on feedback from your users.

Setting the *Device Bandwidth Target* is the preferred method for managing bandwidth utilization on a shared network because it still allows individual remote sessions to exploit all available bandwidth when the network is not congested. In contrast, the *Device Bandwidth Limit* (described in Section 3.1.3) is a hard limit on bandwidth utilization that will restrict the user experience even if no other traffic is on the network.

3.1.2 Device Bandwidth Floor

The *Device Bandwidth Floor* specifies the minimum bandwidth that a remote session will consume when congestion is present and bandwidth is required. Bandwidth utilization will drop below the floor when bandwidth is not required (e.g., when the display is static).

This setting is intended for use in networks where persistent packet loss (Section 3.4) or packet reordering (Section 3.5) cannot be eliminated. The best solution is to identify and fix the source of packet loss or packet reordering in the network. While the network problem is being resolved, the PCoIP session experience can be improved by using the *Device Bandwidth Floor* setting.

The default setting of 0 (zero) uses the default bandwidth floor (currently 1,000 kbps for 1:1 sessions). Setting this to a non-zero value (> 1,000 kbps) will give remote users a better user experience by increasing the minimum bandwidth the remote session will attempt to use in the presence of persistent packet loss. However, this should be done in consultation with users and only if network bandwidth and demands are well understood, because the higher this value is set, the less flexibility the PCoIP protocol has to adjust to real network congestion. As a result, setting this value too high can result in a significantly degraded overall experience if the network becomes oversubscribed, that is, the combined traffic from all remote sessions exceeds the bandwidth that the network can provide).

Once the network packet loss/reordering issue in the network has been resolved, reset the *Device Bandwidth Floor* to 0 (zero).

3.1.3 Device Bandwidth Limit

The *Device Bandwidth Limit* defines the maximum peak bandwidth that a PCoIP session will consume and is provided primarily for testing purposes, but can sometimes be useful in production deployments.

- The *Device Bandwidth Limit* setting on the host card limits bandwidth on traffic from the host to the client (primarily display data). This represents the vast majority of bandwidth utilization.
- The *Device Bandwidth Limit* setting on the client limits bandwidth on traffic from the client to the host (e.g., USB or microphone audio data).
- The bandwidth limit range is 1,000 to 220,000 kbps.

The recommended setting for the *Device Bandwidth Limit* is 0 (zero), which configures the PCoIP processor to adjust the bandwidth solely based on network congestion with no limit. The processor will maximize the user experience based on the bandwidth available at any given moment. However, a non-zero setting (> 1,000 kbps) may be appropriate in situations where there are network constraints, such as:

- If there is a known network bandwidth constraint between the PCoIP host and client, set the *Device Bandwidth Limit* to approximately 90% of this bandwidth limit.
 - For example, if the PCoIP host is on a 100 Mbps network but the zero client is connected on a 6 Mbps ADSL link, set the *Device Bandwidth Limit* to approximately 90% x 6 Mbps = 5,400 kbps.
- If you are experiencing congestion and packet loss on a network being shared between PCoIP sessions and other types of network traffic, consider setting the *Device Bandwidth Limit* to constrain aggregate PCoIP session bandwidth.
 - For example, if you have four similar users (similar application demands and priority) sharing a 6 Mbps link with other network traffic, setting the *Device Bandwidth Limit* to 70% of the link bandwidth (70% x 6,000 kbps = 4,200 kbps) will help reduce congestion on the network.

If you must limit bandwidth utilization on your network, use the *Device Bandwidth Target* setting first before adjusting the *Device Bandwidth Limit*. Get input from your users as you adjust these settings to find the bandwidth limit at which users are satisfied with their desktop experience.

3.2 Image Quality and Bandwidth Management

The PCoIP protocol constantly monitors the available bandwidth and the complexity of the graphics being delivered and adjusts the image quality and frame rate to provide the best user experience (image quality and desktop responsiveness) under changing conditions.

There are two configuration parameters to adjust the imaging quality of the session. These are accessed via Configuration ⇒ Image on the zero client Web interface. These parameters are not available on the PCoIP host card.

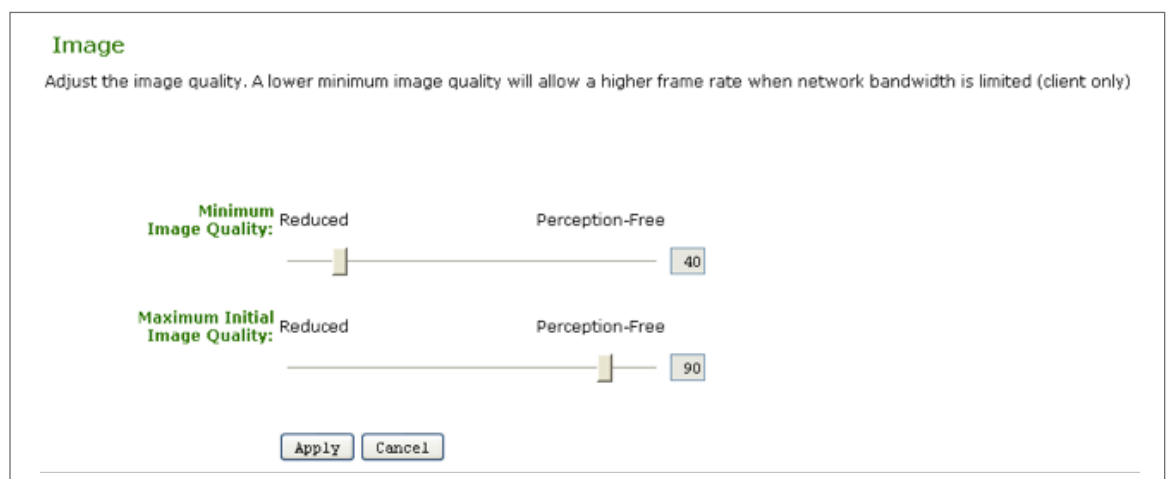


Figure 5: Image quality settings screen under Configuration ⇒ Image in zero client Web interface

3.2.1 Minimum Image Quality

The *Minimum Image Quality* slider allows you to balance image quality and frame rate when network bandwidth is limited. Some use cases, such as those involving onscreen motion and rapid screen changes, may benefit from lower-quality images at a higher frame rate (slider toward “Reduced,” meaning “optimize for frame rate”) while others, such as those requiring more careful examination of static screen content, may be better served by higher-quality images at a lower frame rate (slider toward “Perception-Free,” meaning “optimize for frame image quality”). The default setting for *Minimum Image Quality* is 40, which tends to optimize for frame rate.

This setting affects image display only when network bandwidth is constrained. When bandwidth is not constrained, the PCoIP protocol will deliver perception-free quality regardless of the *Minimum Image Quality* setting.

Note: *Minimum Image Quality* can also be configured using the OSD via User Settings ⇒ Image tab as shown below.

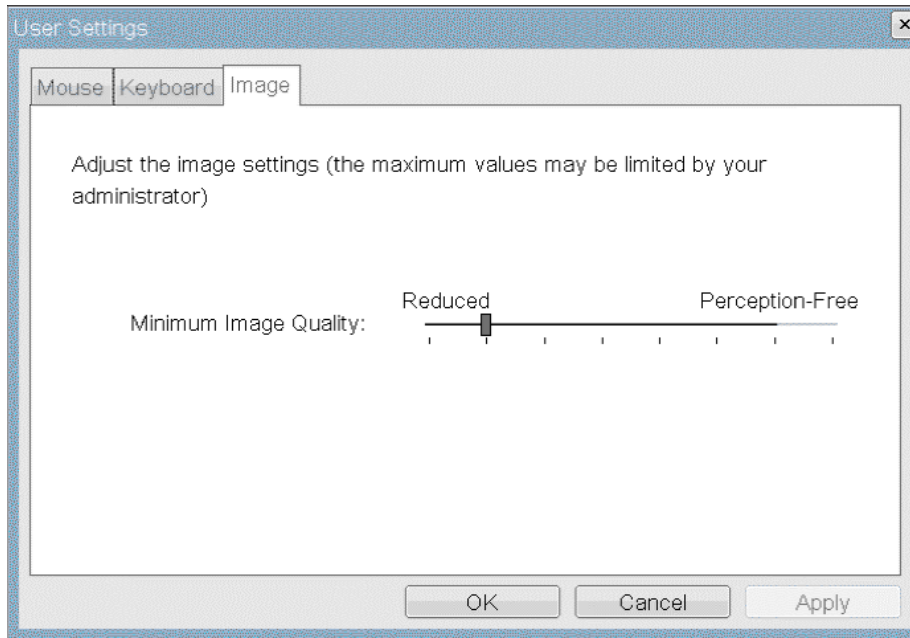


Figure 6: Minimum Image Quality setting under User Settings ⇒ Image in zero client OSD

3.2.2 Maximum Initial Image Quality

The *Maximum Initial Image Quality* slider can be used to reduce network bandwidth peaks caused by significant screen changes. Reducing *Maximum Initial Image Quality* may also reduce average bandwidth utilization under certain circumstances (this is highly dependent on the details of your application and graphics, as explained below).

Reducing this setting limits the quality of the first video frame of a screen change, thereby reducing bandwidth utilization. Because of the PCoIP protocol's progressive build capability, all static regions of the image will build to a lossless state during subsequent screen refreshes regardless of this setting. Reducing the *Maximum Initial Image Quality* setting will reduce average bandwidth requirements in situations when the screen image is changing rapidly over a period of time, because in such situations, the individual screens never have a chance to build to a lossless state until the final screen in a sequence.

The default value for *Maximum Initial Image Quality* is 90 but it can generally be set to 70 or 80 without impacting the experience of the average user.

Note: *Maximum Initial Image Quality* must be greater than or equal to the *Minimum Image Quality*.

3.3 Latency

1:1 PCoIP sessions currently support network latency of up to 150ms. The PCoIP protocol can be used over higher-latency networks, but the user experience will be impacted as latency increases.

System responsiveness becomes sluggish for many users at 40 – 60ms of network latency. If WAN latency is causing usability problems, such as poor mouse responsiveness or dropped keystrokes, consider installing the PCoIP host agent that improves keyboard and mouse performance over high-latency networks. See Section 8.1 for details on the PCoIP host agent.

3.4 Packet Loss

Typical symptoms of packet loss include sluggish desktop responsiveness and blurry images. Packet loss can affect both the user experience and USB connectivity even if the base latency and bandwidth meet PCoIP protocol requirements. Packet loss below 0.1% should not have a noticeable impact on user experience or USB connectivity.

While network packet loss is usually specified as a percentage (e.g., 0.1%), physical networks typically lose packets in small bursts rather than being randomly dispersed throughout time. However, if a network is experiencing random, persistent packet loss, the PCoIP protocol will interpret this as network congestion and reduce the bandwidth it transmits in an attempt to eliminate this “phantom” congestion. Since the persistent packet loss is coming from the network itself rather than from congestion, the PCoIP session eventually reaches the “floor” bandwidth (*Device Bandwidth Floor*, Section 3.1.2) and will result in a lower level of experience than the network can support.

Note: Many “WAN emulators” simulate packet loss as persistent, random events rather than the bursts of packet loss that actual WANs experience. Thus, if you are testing with one of these WAN emulators, you will also observe this artificially lower user experience.

The best solution to this problem is to find and fix the source of packet loss in the network (or use a more sophisticated WAN emulator). While the network packet loss issue is being resolved, the PCoIP session experience can be improved by using the *Device Bandwidth Floor* setting (see Section 3.1.2)

Note that misuse of the *Device Bandwidth Floor* can also create packet loss. If the combined “floor bandwidth” of multiple PCoIP sessions on the same network exceeds the capacity of that network, the PCoIP protocol will attempt to transmit more data than the network can accommodate, resulting in continuous packet loss. To prevent this, ensure your network can provide the combined floor bandwidth for all the sessions sharing a common network link and adjust session floor bandwidths (or network capacity) if necessary.

3.5 Packet Reordering

The PCoIP protocol is capable of handling packets that arrive in a different order from that in which they were sent because a small amount of packet reordering can be expected in a WAN. However, if a packet does not arrive within a certain time window, it is considered “lost” by the PCoIP protocol even though it may eventually arrive. This is done to preserve the interactivity of the user experience: in a dynamic environment, significantly delayed packets are often no longer relevant. However, if the network is consistently delivering packets “late,” the experience will be similar to a network with persistent packet loss.

Thus, if your PCoIP sessions are consistently operating at the “floor bandwidth” even though the network is not congested and no significant packet loss is being reported, packet reordering may be the cause. A device in the network path (e.g., a router or WAN accelerator) is the likely source of persistent packet reordering. While the source is being identified and fixed, the PCoIP session experience can be improved by raising the *Device Bandwidth Floor* setting (see Section 3.1.2).

3.6 Auto-Discovery and Subnets

Many PCoIP zero clients ship with auto-discovery turned on by default. This feature locates PCoIP host cards on the same subnet as the client and is intended primarily for test rather than production use. Use of DNS-SRV records is recommended for production deployments.

For production deployments, or if your host and client are on different subnets, disable auto-discovery via Configuration ⇒ Discovery on the zero client OSD or Web interface and configure the session information manually by entering the IP address (or FQDN) and MAC address of the peer host card under Configuration ⇒ Session in the zero client Web interface or zero client OSD (see Figures 7, 8, 9, 10). The host card MAC address is printed on a sticker on the card itself and on the box of most host cards.

When auto-discovery is enabled and you click the Connect button on the client, the client displays only the first five host cards that it finds. These may change on subsequent connection attempts if there are more than five host cards on the subnet.

Discovery
Automatically discover other PCoIP devices

Enable SLP Discovery:

Enable Host Discovery (client only):

Enable DNS SRV Discovery:

DNS SRV Discovery Delay: seconds

Apply Cancel

Figure 7: Disabling SLP and Host Discovery under Configuration ⇒ Discovery in the zero client Web interface

Session
Configure the connection to a peer device

Accept Any Peer (host only):

Session Type (client only): PCoIP

Identify Peer by: IP address FQDN

Peer IP Address:

Peer MAC Address:

Enable Auto-Reconnect (client only):

Enable AES-128-GCM:

Enable Salsa20-256-Round12:

Apply Cancel

Figure 8: Configuring the peer IP and MAC addresses under Configuration ⇒ Session in the zero client Web interface

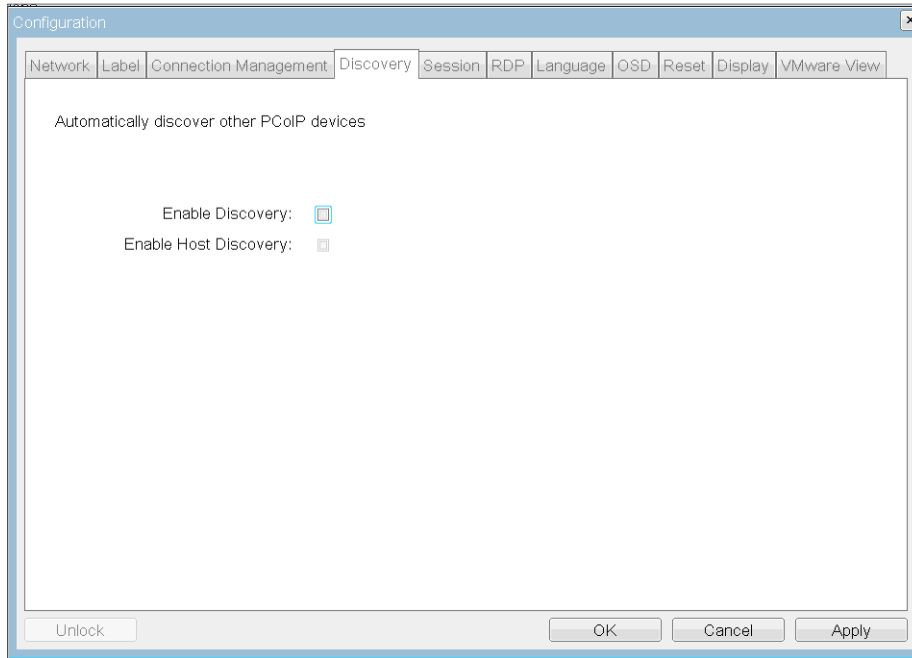


Figure 9: Disabling auto-discovery in the Configuration ⇒ Discovery tab of the zero client OSD

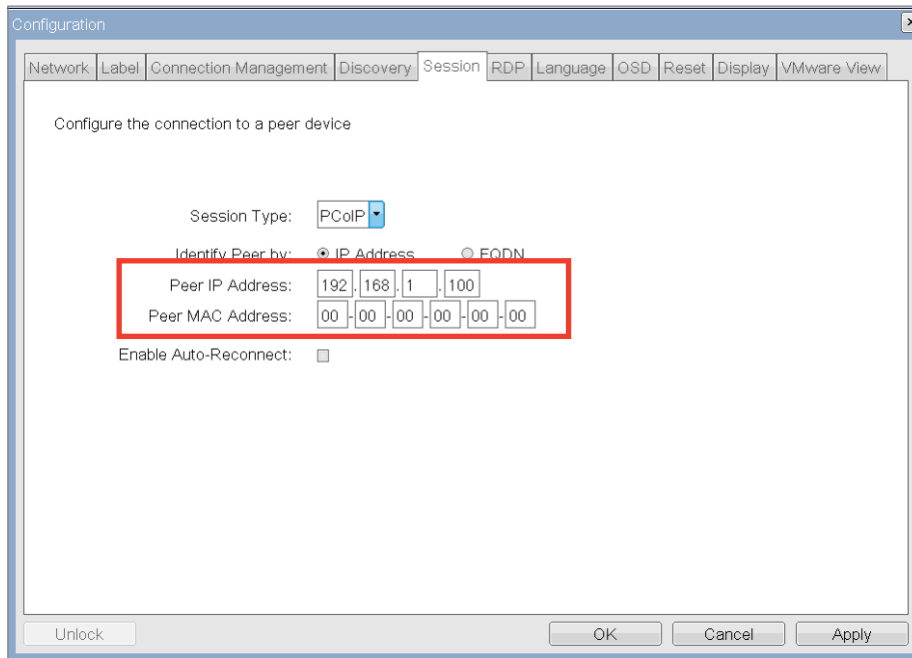


Figure 10: Configuring the host IP and MAC addresses in the Configuration ⇒ Session tab of the zero client OSD

3.7 Temporal Dithering

Temporal dithering is a technique employed by some graphics cards to simulate colors that they cannot natively display by rapidly changing the colors of pixels, tricking the eye into seeing “in-between” colors. During PCoIP remote sessions, temporal dithering can cause extremely high bandwidth utilization because the rapidly changing pixels force the PCoIP protocol to constantly deliver large screen updates to the remote desktop.

There is no acceptable way to reduce bandwidth consumption caused by temporal dithering because lowering the PCoIP *Device Bandwidth Target* or *Device Bandwidth Limit* will impair user experience with reduced responsiveness and image quality. However, some graphics cards allow temporal dithering to be disabled, especially under Linux. Consult your graphics card documentation or contact your card vendor for details on disabling temporal dithering. The [Teradici Knowledge Base](#) also contains information on temporal dithering and how to disable it.

4 IP Addresses

4.1 DHCP

The PCoIP client and host are set to “DHCP client” mode by default, meaning the host and client IP addresses are assigned by the DHCP server on your IP network. If your IP network does not have a DHCP server, the client and host card will fall back to a static IP address mode after a timeout period of approximately two minutes. In the fallback static IP address mode, you can access the client and host Web interfaces to disable DHCP client mode and assign a static IP address. The client’s fallback IP address is 192.168.1.50 and the host’s fallback IP address is 192.168.1.100.

4.2 Determining IP Addresses

Any computer connected to a corporate network or the Internet has a standard network card with an IP address. In addition, the PCoIP host card has a dedicated Ethernet jack that delivers PCoIP remote desktop data to the client. This host card Ethernet jack also has its own IP address. As a result, a PCoIP host computer on a corporate network or the Internet has two different IP addresses – one for the standard network card and one for the PCoIP host card. The PCoIP zero client has one IP address.

There are several ways to find the PCoIP host and client IP addresses:

- To find the address of the PCoIP zero client, access Options ⇒ Configuration ⇒ Network tab on the client OSD. If the client is statically connected to a host card, the host card IP address is displayed as the “Peer IP Address” on the Session tab.

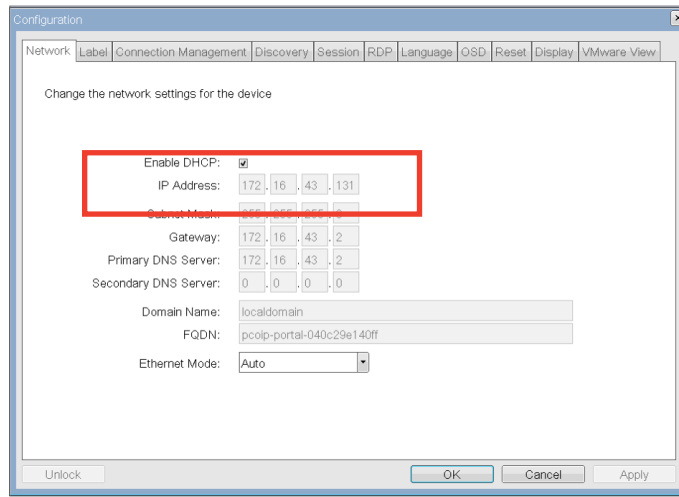


Figure 11: Client IP address on OSD Network tab

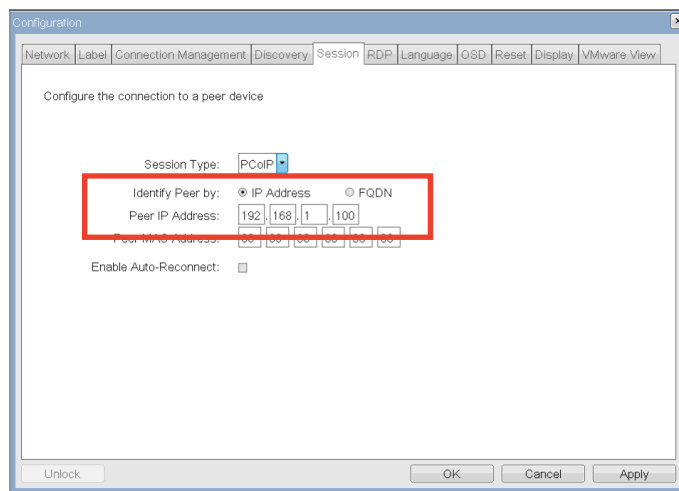


Figure 12: Host IP address on OSD Session tab (if client is statically paired to the host)

- If the host and client are on the same subnet containing a small number of PCoIP devices and host discovery is enabled, click the client Connect button. The auto-discovery function will locate host cards. However, if there are many PCoIP hosts on the subnet, only the first five devices located are displayed, and the five that are displayed may change on subsequent connection attempts.
- To find the IP address of a host card, navigate to “pcoip-host-<MAC-ADDRESS>” in a Web browser where <MAC-ADDRESS> is the MAC address of the host card with all hyphens and spaces removed (e.g., for host card MAC address 00-1C-B3-BF-22-45 use “pcoip-host-001CB3BF2245”). This will open the host card Web interface. The MAC address is printed on a sticker on the card itself and on the box of most host cards and may also be under Options ⇒ Configuration ⇒ Session tab on the client OSD if the client and host are statically paired.

- To find the IP address of a zero client, navigate to “pcoip-portal -<MAC-ADDRESS>” in a Web browser where <MAC-ADDRESS> is the MAC address of the client with all hyphens and spaces removed (e.g., for zero client MAC address 00-1C-B3-BF-22-45, use “pcoip-portal-001CB3BF2245”). This will open the zero client Web interface. The client MAC address is printed on a sticker on the outside of the client and is also under the Options ⇒ Information tab on the client OSD.
- If the PCoIP host agent is installed, open the PCoIP Agent (click the PCoIP icon in the system tray) and select *Network*.

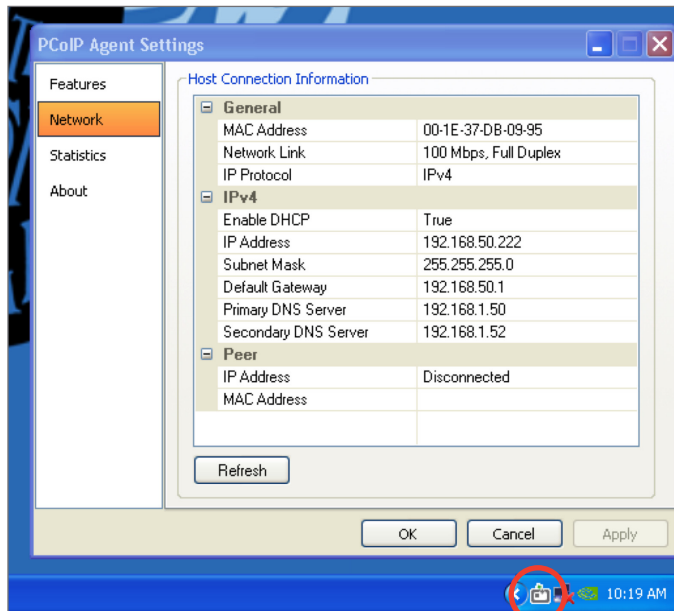


Figure 13: Network information in PCoIP host agent application (with system tray icon circled)

- Look up the IP address in your DHCP server client table.
- Use the PCoIP Management Console, a Web-based management tool available from various PCoIP solution vendors and from Teradici (see Section 1.3).

5 Connection Problems

If the Connect button on the client onscreen display (OSD) is inactive or if the client cannot discover any host cards on the IP network, check the network connection and confirm the Ethernet switch or router is on.

Under Options ⇒ Diagnostics on the client OSD, you can ping a known IP address to check for reachability (see Figure 14).

Ensure that your firewall is not blocking PCoIP traffic. For specific port information, refer to the entry “What are the required TCP/UDP ports for PCoIP Technology?” in the Teradici Knowledge Base.

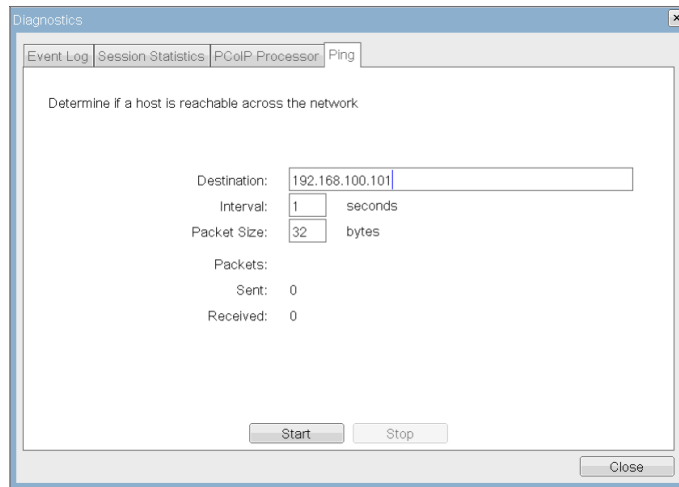


Figure 14: Pinging an IP address from the zero client OSD (Options ⇒ Diagnostics ⇒ Ping tab)

6 Video

6.1 Monitor and Graphics Card Compatibility

In addition to DVI monitors, zero clients are compatible with analog VGA and digital HDMI monitors. Attach a DVI-to-VGA or DVI-to-HDMI adapter to the zero client’s DVI connector.

In addition to DVI graphics cards, a host card can also be connected to a DisplayPort graphics card using a DisplayPort-to-DVI adapter. The host card is not compatible with VGA video cards. Use of a VGA-to-DVI adapter to connect a VGA video output to the host card’s DVI input will result in no video being displayed on the remote desktop.

Ensure the correct driver for your video card is installed. Incorrect drivers can cause the display to flicker, blink, or freeze. Drivers are available from your video card vendor.

6.2 Client Does Not Display Desktop – “Source Signal on Other Port”

When using the client with a single monitor (or with a single PCoIP integrated monitor), it is possible for the video signal to be sent to the video output with no monitor. When this happens, the easiest solution is to reverse the connectors connecting the graphics card to the PCoIP host card or to connect the monitor to the other DVI output on the client (if you are using a client connected to a separate monitor). Another alternative is to remap (swap) the monitors in the host operating system.

Note that some graphics cards must be connected when they boot or they do not provide video output. If you connected or switched the video connector cables after booting the host PC, you may have to restart the host PC after connecting the video cables to restore video.

6.3 Temporal Dithering

Temporal dithering is a technique used by some graphics cards that can cause excessive bandwidth utilization during PCoIP remote sessions. See Section 3.7 for details.

7 Audio

Zero clients use the Realtek High-Definition Audio Codec. Windows 7 and Vista natively contain an HD Audio driver for this Codec. For other operating systems, including Windows XP, download and install the High-Definition (HD) Audio Codec driver from <http://www.realtek.com> to use the PCoIP system’s full audio capabilities.

The screenshot shows the Realtek website's software driver download page. The page title is "Software: Drivers & Utilities" and it is categorized under "High Definition Audio Codecs". The table below lists various drivers for Windows operating systems. A red box highlights the row for "Windows 2000, Windows XP/2003(32/64 bits) Driver only (Executable file)".

Description	Version	Update Time	File Size	Download		
				Site 1	Site 2	Site 3
Vista, Windows7 Driver (32/64 bits) Driver only (ZIP file)	R2.46	2010/3/30	56092k	GO	GO	GO
Windows 2000, Windows XP/2003(32/64 bits) Driver only (ZIP file)	R2.46	2010/3/30	30638k	GO	GO	GO
Windows 2000, Windows XP/2003(32/64 bits) Driver only (Executable file)	R2.46	2010/3/30	30482k	GO	GO	GO
README	R2.46	2010/3/30	250k	GO	GO	GO
Vista, Windows7 Driver(32/64 bits) Driver only (Executable file)	R2.46	2010/3/30	55730k	GO	GO	GO
Vista, Windows7 Driver(32bits) Driver only (Executable file)	R2.46	2010/3/30	28788k	GO	GO	GO
Vista, Windows7 Driver(84bits) Driver only (Executable file)	R2.46	2010/3/30	31820k	GO	GO	GO
ATI HDMI Audio Device	R2.42	2010/2/12	17953k	GO	GO	GO
3D SoundBack Beta 0.1 (Realtek 3D SoundBack restores audio effects, including surround sound, reverberation, and spatial effects, for legacy game titles when running on Windows Vista.)	Beta 0.1	2008/7/15	6232k	GO	GO	GO

Figure 15: Realtek software driver download page

To enable audio, open the host card Web interface, enable audio under Permissions ⇒ Audio and restart the host. When using 64-bit Windows Vista or Windows 7 on the host PC, also enable 64-bit on the same configuration page. Do the same for the client.

Ensure the audio connectors are properly connected.

8 WAN Support

8.1 Local Keyboard and Mouse Host Agent

Teradici offers PCoIP host agent software designed to provide faster response to mouse input and more reliable keyboard function over high-latency networks by rendering the mouse and terminating the keyboard locally on the zero client. This host agent package is available from PCoIP solution vendors and from the download section of the Teradici support site. Carefully follow the documentation included with the host agent package because there are several steps that must be performed in a specific order. The agent functionality will not work if you install the agent package without performing the prior steps. Also note that there are separate agent packages for Windows and Linux host operating systems.

8.2 VPN Connectivity

PCoIP sessions can operate in a WAN environment that traverses the public Internet. This type of deployment requires the user to install and configure additional network equipment that implements a VPN tunnel.

PCoIP protocol data packets are IPSec-ESP encrypted and do not have any port numbers external to encryption. As a result, the packets are not compatible with networking equipment that implements Network Address Translation (NAT), which is used by the Internet and some corporate WANs.

In order to use NAT networking equipment with the PCoIP protocol, network traffic must be encapsulated in a tunneling protocol. This tunneling can be achieved using a hardware VPN. The VPN tunneling allows data packets to remap from a public IP address space to and from a private IP address space. Below is a simplified diagram showing such a scenario.

For details, see PCoIP VPN Deployment Guide (TER0902002), which discusses Network Address Translation, IPSec, PCoIP connection requirements, and configuration of the VPN, routers, and PCoIP endpoints.

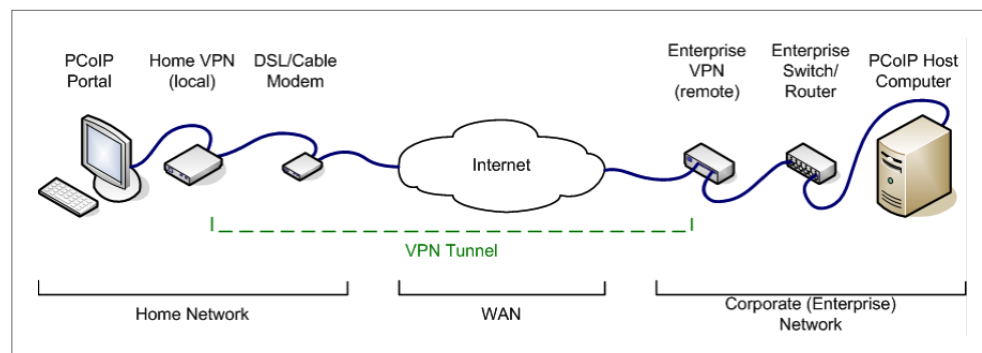


Figure 16: Simplified diagram of a PCoIP zero client connecting over public Internet via VPN

9 Frequently Asked Questions

Why is my PCoIP session using >100 Mbps almost all of the time?

This is typically caused because temporal dithering is enabled on your graphics card. See Section 3.7 for more details.

Why is my PCoIP session performing poorly when my network is not busy?

This problem is typically caused by persistent packet loss or significant packet reordering. See sections 3.4 and 3.5 for details and how to resolve these issues.

Why are some users reporting good user experiences while others on the same network are reporting a poor experience?

“Unfair” sharing of the network may cause this. See Section 3.1.1 to understand the use of the Device Bandwidth Target setting to correct this situation.

Why is my pointer lagging so much?

This is probably caused by the latency on the network being greater than 40ms. See Section 8.1 to understand how to install the local mouse and keyboard support.

How do I connect a zero client to a host system behind the corporate firewall?

You will need a hardware VPN device to provide this connection. For details, see PCoIP VPN Deployment Guide (TER 0902002), which discusses Network Address Translation, IPSec, PCoIP connection requirements, and configuration of the VPN, routers, and PCoIP endpoints. Also, refer to the entry “What are the required TCP/UDP ports for PCoIP Technology?” in the Teradici Knowledge Base.

Why does my PCoIP session seem less crisp when I first connect?

In order to minimize the impact of new remote sessions on the network, the PCoIP protocol initiates sessions at reduced bandwidth and increases bandwidth utilization over the first few seconds. For this reason, you may briefly see low-bandwidth video artifacts until bandwidth utilization ramps up.

