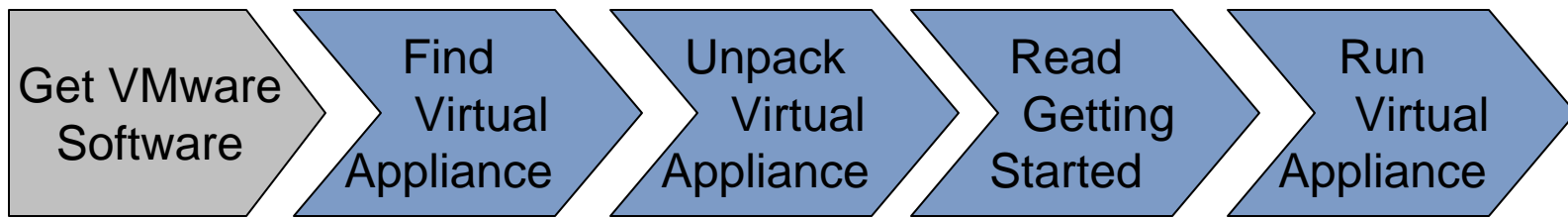




Getting Started with Virtual Appliances



Process Overview

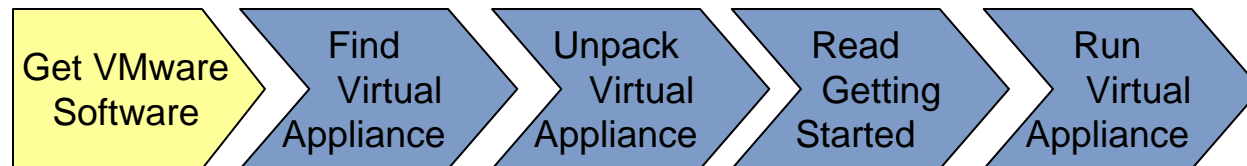


Quick and easy process

No software to install (install VMware once)

Evaluate or deploy completely configured and tested solutions within minutes!

Get VMware Software



If you don't already have VMware software installed...

Go to <http://vmware.com/download>

Download one of our free products

OR

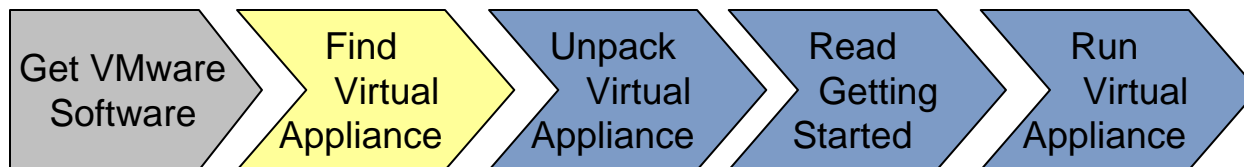
Download a trial of VMware Infrastructure 3
(for advanced, enterprise-class virtualization)

OR

Download a trial of VMware Fusion if you run a Mac



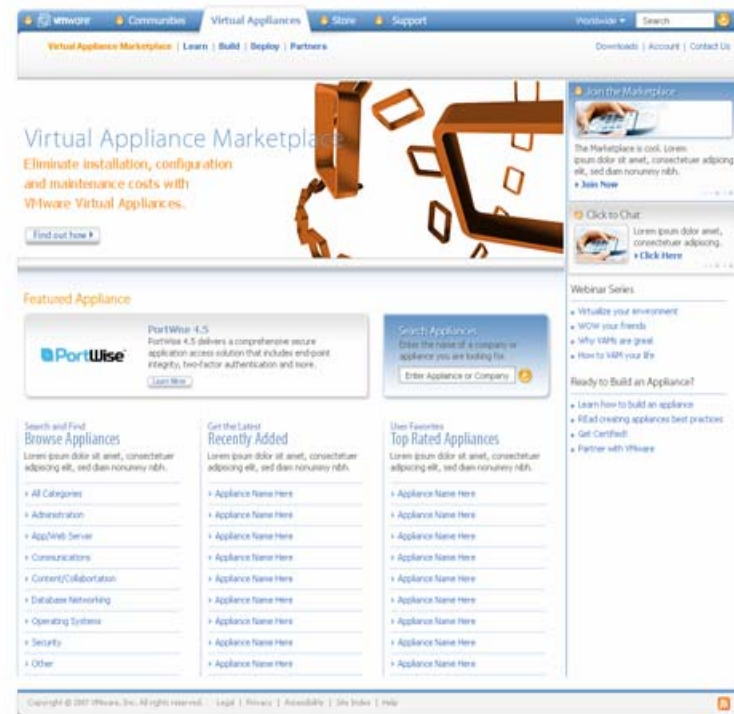
Find a Virtual Appliance



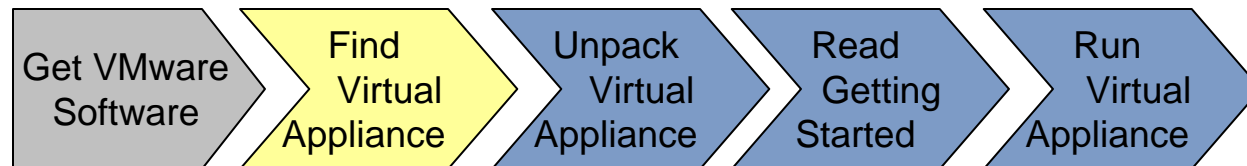
Go to <http://vam.vmware.com/>

Use the search function or browse different categories for a virtual appliance that interests you...

There are more than 575 virtual appliances to choose from



Find a Virtual Appliance



MindTouch Deki (Wiki)



MindTouch Deki – Use the enterprise wiki with the award winning interface that sets up in minutes and automatically updates

DESCRIPTION

MindTouch Deki is a business wiki that gives your business that edge—fast. MindTouch Deki enables you to create, edit, share, store and search documents, emails, images and files through an internal web site. It is a flexible product that can be used as a dedicated collaboration tool, or as an enhanced intranet or file server.

Fully featured
MindTouch Deki is brimming with features that business wiki users demand:

·WYSIWYG rich-text editing

TRY NOW

BUY NOW



COMMUNITY FEEDBACK

3 votes

★★★★☆

Log in to rate item

[Comment on this appliance](#)

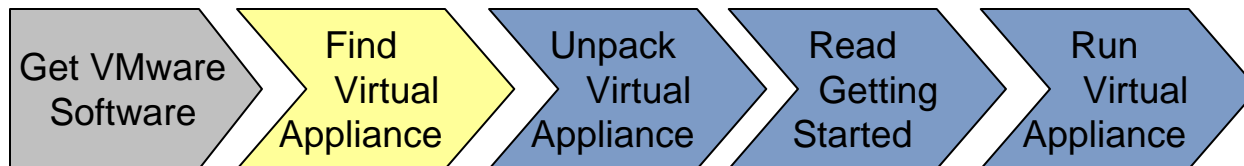
RELATED CATEGORIES

[Desktop User](#) | [Advanced Desktop User](#) | [Buy](#) | [Certified](#) | [Content Mgmt & Collab](#) |

For this example, find the MindTouch Wiki virtual appliance and click the button...

TRY NOW

Find a Virtual Appliance



On the MindTouch site, click the [Download](#) button and the download process will begin...

MindTouch Deki software

- Installs in 15 minutes
- Intuitive user interface
- WYSIWYG rich-text editing
- Outlook Connector
- Easy XML integration
- Works on Windows/Linux
- Free for up to 5 users

[Flash Demo](#) [Download](#) [Buy Now](#)

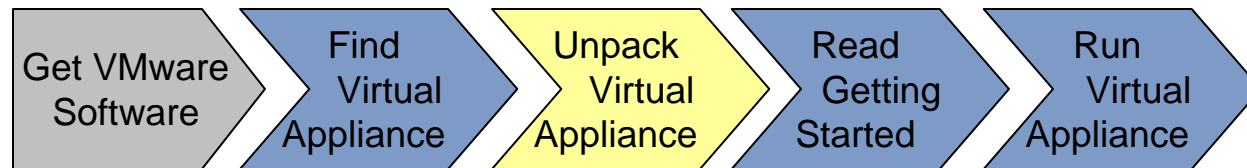


[Overview](#) [Features](#) [Brochure](#) [Pricing](#) [Why Deki?](#)

The screenshot shows the MindTouch Deki web editor. The main content area contains a paragraph of text, a 'Thanks Tom' message, and two images: a person jumping in a field and a sunset over the ocean. The interface includes a sidebar with a 'Sandbox' section and a top navigation bar with 'My Pages', 'Watch', 'Links', and 'Help'.

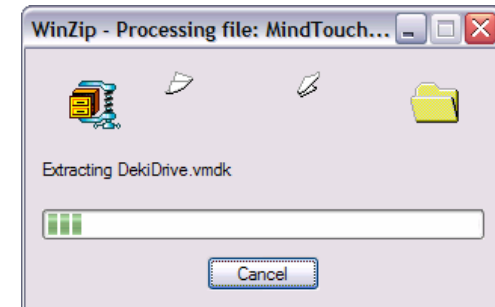
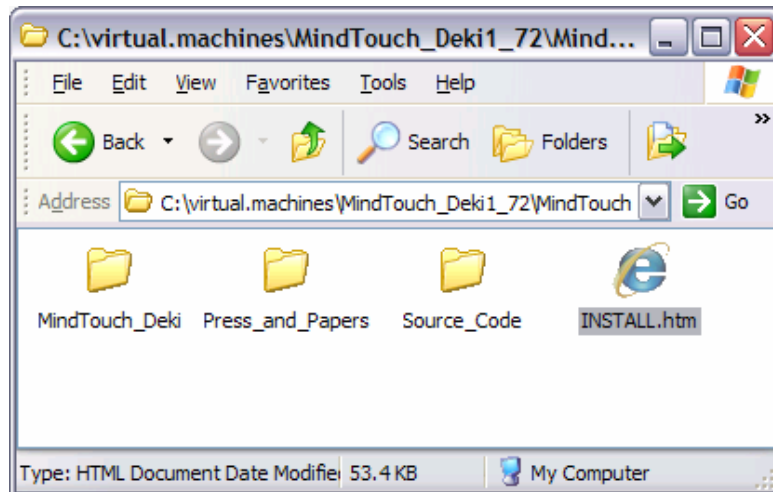
- 1 WYSIWYG, rich-text page creation/editing in a familiar web browser/word processing user interface.
- 2 Every user has his or her own page.
- 3 Lists what new pages and edits have been posted by whom so user can read them and quickly act on them.
- 4 Contains many useful tracking and alerting tools such as My Watched Pages, My Contributions, RSS Feeds, User/Guest Lists, Most Popular Pages.
- 5 One-click to launch new page or edit page.
- 6 Complete version tracking of each page by date, person and description. Can revert to any version desired.
- 7 Many familiar and useful word processing functions.
- 8 One-click page linking function.
- 9 Insert templates.
- 10 Flexible page navigation.

Unpack the Virtual Appliance

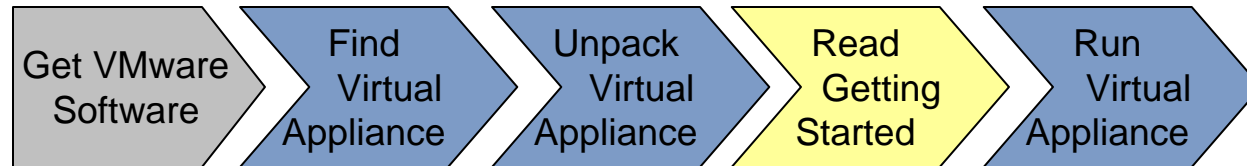


Find your favorite UnZip utility and unpack the MindTouch virtual appliance

Navigate to the new folder which was created



Read the Getting Started Docs



- Open `INSTALL.HTM` in your browser
- Read the installation instructions
- Unzip the actual appliance (step 2)

Install MindTouch Deki

Deploying MindTouch Deki is as easy as 1 - 2 - 3 and will take only minutes.

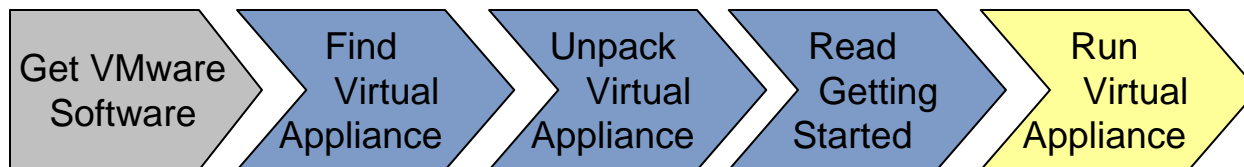
- **STEP 1 - Install VMware Player**
This is included in this package, [click here](#). **Note:** some browsers may ask you to confirm accessing this file, click Ok and allow access to the installer
- **STEP 2 - Boot MindTouch Deki**
[Unzip this file](#) somewhere on your local hard drive. Open VMware Player. In the Player browse to the MindTouch Deki folder you just decompressed, select the MindTouch Deki file, and click Open. MindTouch Deki will load in the Player. **Note:** While using Deki you need to keep the VMware Player running. You may choose to run Deki in VMware Server. It too is a [free download](#) from VMware.
- **STEP 3 - You're almost there!**
Complete the registration presented in the VMware Player and wait until MindTouch Deki has finished its boot and update process.

The address of your new Deki is shown in the VMware Player. Type this web addresses or IP address into your Internet browser's address bar to connect to MindTouch Deki. Fini..

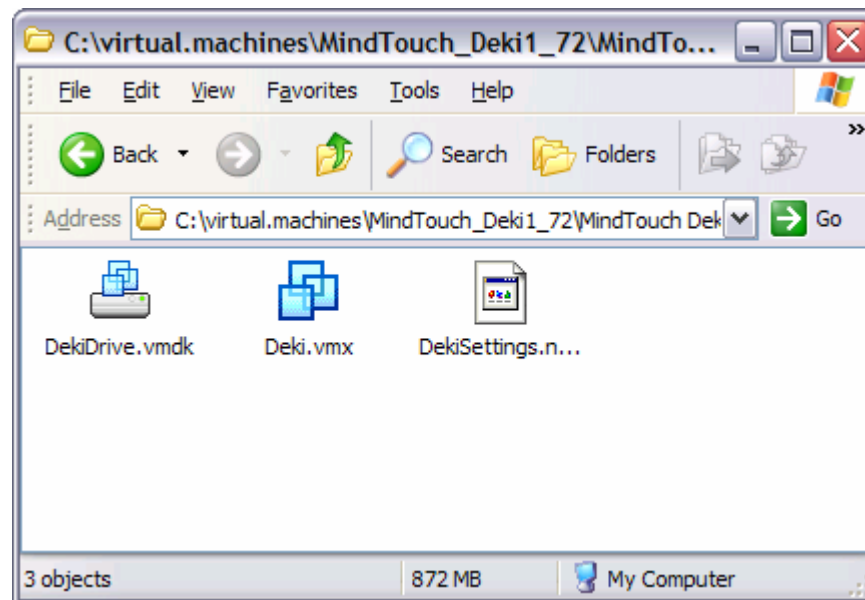
Your Deki **log in** credentials for the admin user were sent to the email you provided during registration. Use these to login and personalize MindTouch Deki for your workgroup or organization. If you do not receive these credentials repeat Steps 1-3, but be certain to decompress MindTouch Deki into a differently named folder and to provide an email address that you're certain you will receive the email.

That's it! You are now ready to use MindTouch Deki and collaborate instantly!

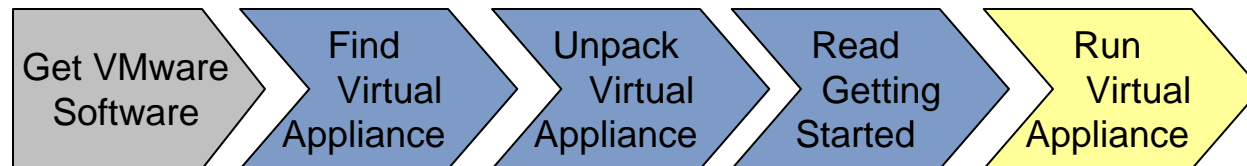
Run the Virtual Appliance



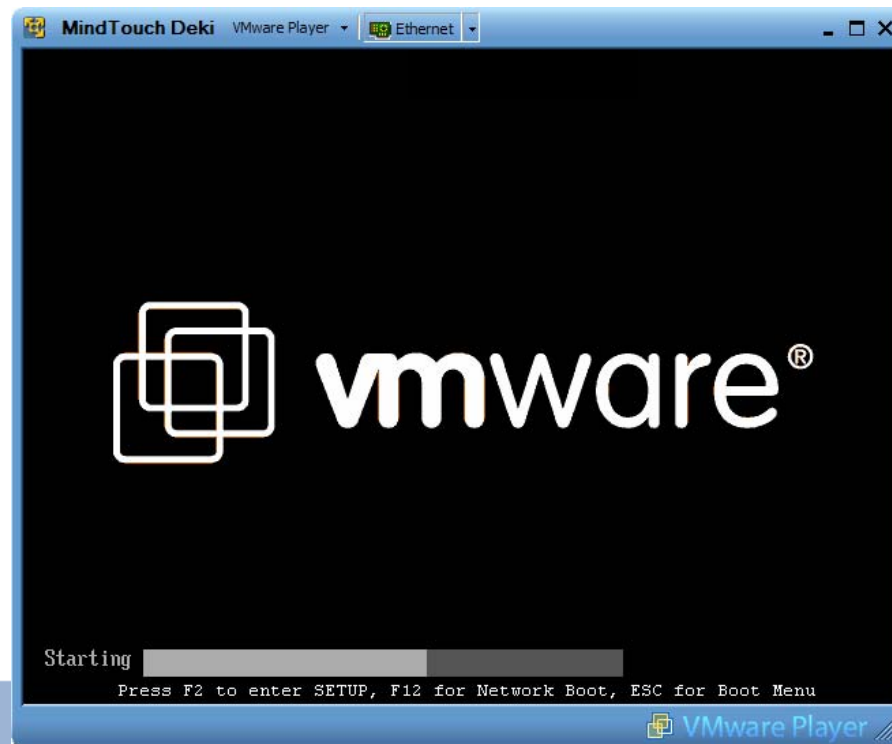
Find the file `Deki.vmx` and double click on it to open the Virtual Appliance (in VMware Player or VMware Server... whichever is associated with the `.vmx` file type)



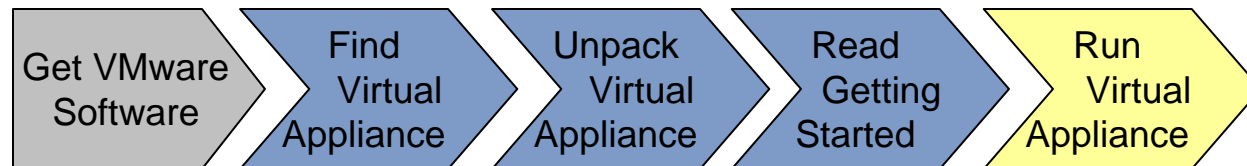
Run the Virtual Appliance



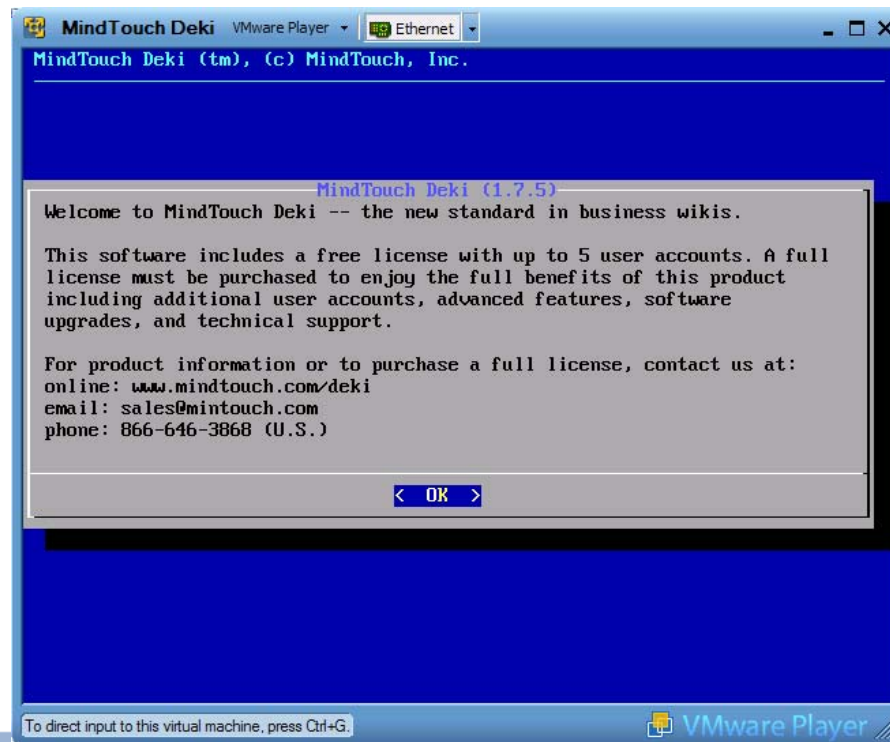
Allow the virtual appliance to boot and go through all of the initial boot auto-configuration...



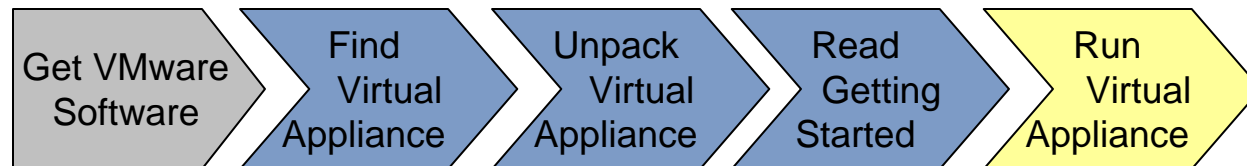
Run the Virtual Appliance



Accept the terms of the EULA...



Run the Virtual Appliance



Complete the Registration form...

The screenshot shows a VMware Player window titled 'MindTouch Deki'. The main window displays the 'MindTouch Deki Registration' form. The form has a blue background and contains the following text:

MindTouch Deki (tm), (c) MindTouch, Inc.

MindTouch Deki Registration

Please enter the following information to register MindTouch Deki.

NOTE: A valid email address is required to complete the registration and ensure proper maintenance in the future. Once registered, you will receive an email with your unique Sysop password.

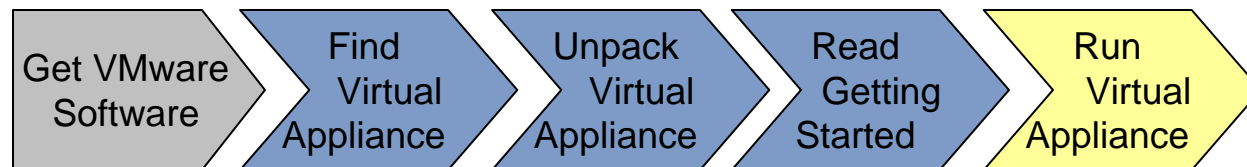
The form includes four input fields:

- Name: [Redacted]
- Phone Number: [Redacted]
- Email: [Redacted]
- Email (verify): [Redacted]

At the bottom of the form, there is a navigation bar with '< OK >' buttons.

At the bottom of the VMware Player window, there is a status bar that reads: 'To direct input to this virtual machine, press Ctrl+G.' and the VMware Player logo.

Run the Virtual Appliance



Let the Virtual Appliance complete the registration and configuration process. Write down the management URL indicated...

```
MindTouch Deki Player - Ethernet
Running Deki diagnostics (this may take a while)...
WARNING: Service failed: CRITICAL - Socket timeout after 10 seconds
[DONE]

MindTouch Deki Serial Number: deki-0707-0229

Free License: Limited to 5 user accounts. For additional user accounts,
advanced features, software upgrades and technical support, visit our
online store at http://www.mindtouch.com.

See http://www.mindtouch.com/license for the complete license text.

NETWORK SETTINGS:
IP: 192.168.123.102 Subnet: 255.255.255.0 Gateway: 192.168.123.254
DNS1: 68.87.76.178 DNS2: 68.87.78.130 MAC: 08:0C:29:9F:B0:47

You can access MindTouch Deki (v1.7.5) by typing one of the following web
addresses in your web browser (To return to your desktop press CTRL + ALT):

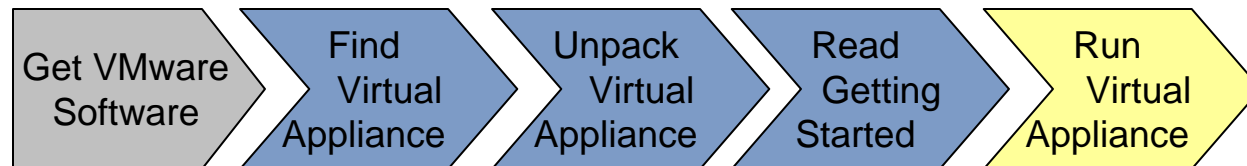
    http://deki07070229/

    http://192.168.123.102/

Visit http://www.mindtouch.com for additional information and upgrades.

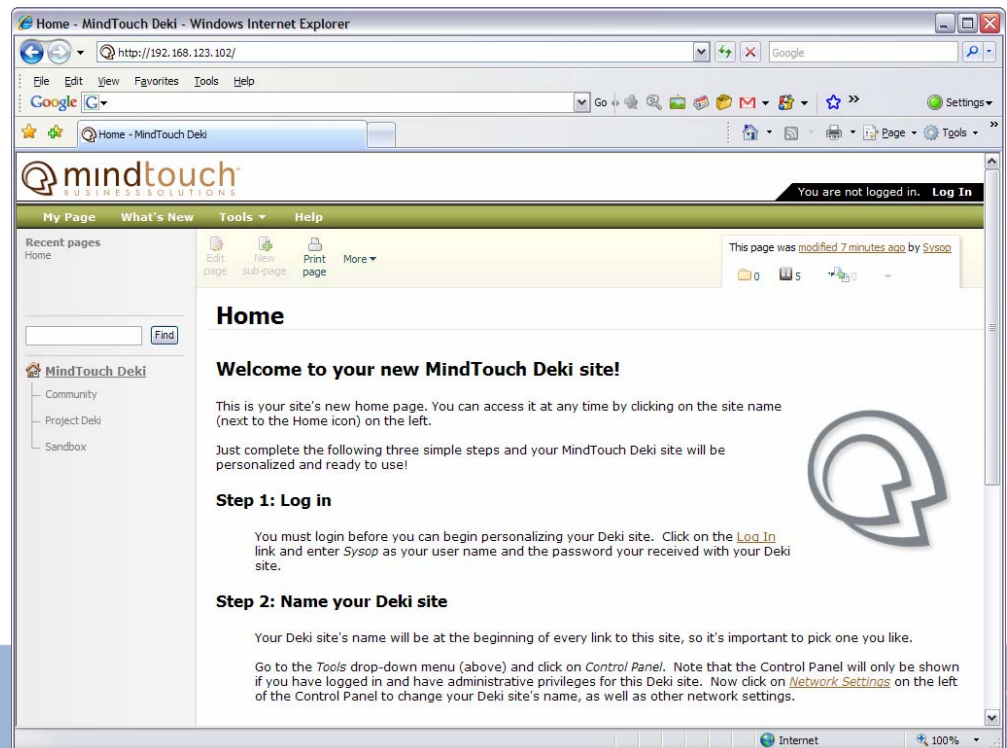
To direct input to this virtual machine, press Ctrl+G
```

Run the Virtual Appliance



In your favorite browser, navigate to the management URL and complete the initial configuration process...

Begin using your Virtual Appliance!



Getting Started with Virtual Appliances

VMware, Inc. 3401 Hillview Ave Palo Alto CA 94304 USA Tel 877-486-9273 Fax 650-427-5001 www.vmware.com

Copyright © 2008 VMware, Inc. All rights reserved. Protected by one or more of U.S. Patent Nos. 6,961,806, 6,961,941, 6,880,022, 6,397,242, 6,496,847, 6,704,925, 6,496,847, 6,711,672, 6,725,289, 6,735,601, 6,785,886, 6,789,156, 6,795,966, 6,944,699, 7,069,413, 7,082,598, 7,089,377, 7,111,086, 7,111,145, 7,117,481, 7,149,843, 7,155,558, 7,222,221, 7,260,815, 7,260,820, 7,268,683, 7,275,136, 7,277,998, 7,277,999, 7,278,030, 7,281,102, 7,290,253; patents pending. VMware, the VMware “boxes” logo and design, Virtual SMP and VMotion are registered trademarks or trademarks of VMware, Inc. in the United States and/or other jurisdictions. All other marks and names mentioned herein may be trademarks of their respective companies.