

# Controlling Compliance in VMware vSphere Environments with VMware vCenter Configuration Manager

Policy-Driven Configuration Management and Compliance Control

## AT A GLANCE

In today's virtualized data center, change is constant and ongoing. Now more than ever, as virtualization and cloud computing adoption grows, system configuration change is an inherent part of the environment. VMware vCenter™ Configuration Manager's policy-driven automation detects deep system changes and identifies whether those changes are within policy—an expected and acceptable behavior based on industry, regulatory, or your own self-defined best practices—or whether that change has created a compliance violation or security vulnerability.

## KEY BENEFITS

- **Secure enterprise visibility**—A centralized change and configuration management console to view VMware vSphere™ deployments enables you to control your entire virtual and physical infrastructure.
- **Ensure continuous compliance**—Regularly assess your virtual infrastructure against VMware Guidelines, alongside industry, regulatory, and OS vendor security and recommended standards.
- **Understand your security posture**—Your security posture not only complies with vendor-specific hardening guidelines but also with relevant regulatory mandates affecting your organization.
- **Enforce virtual machine build policy**—Detect and remedy guests that violate corporate standard build policies.
- **Control virtual sprawl**—Understand virtual infrastructure configuration and track the lifecycle of host configurations and both on-line and off-line guests and their associated snapshots.

## Industry Challenges

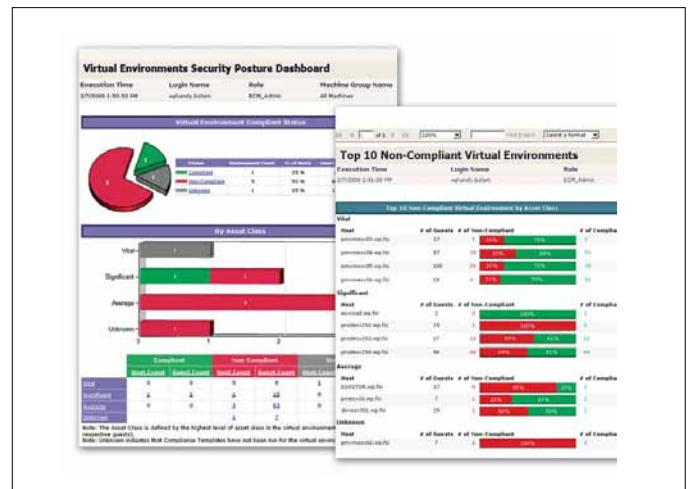
IT organizations are facing pressure to meet ever increasing standards related to governance, risk and compliance—whether those standards come from an industry group, government regulators, a governance board, a set of best practices or even your own organization's policies.

These organizations are also rapidly adopting virtualization for cost savings, server consolidation and more, while struggling with the complexities of maintaining a secure and compliant environment as they drive toward cloud computing and infrastructure as a service. Without the introduction of automation and policy-driven approaches, the level of management complexity can increase with virtualization and make efficiency and control of the environment exceptionally difficult.

## Solution Overview

VMware vCenter Configuration Manager helps organizations address the complexities associated with maintaining compliance in virtualized environments. Configuration Manager provides visibility, control and management across the virtual infrastructure from a central console by adding compliance capabilities to VMware vCenter Server.

Using Configuration Manager, customers can better understand their security posture in order to comply with VMware hardening guidelines, CIS Benchmarks and other applicable compliance measures such as PCI DSS, Sarbanes-Oxley, GLBA, HIPAA and ISO 17799/27001. Configuration Manager enables organizations to enforce virtual build policy and become more agile while maintaining granular control of their infrastructure configuration.



**Figure 1** VMware vCenter Configuration Manager provides a comprehensive view of the security posture and compliance management controls for virtual environments.

## Relevant Capabilities

### vCenter Configuration Manager Features

#### • Virtualization Visibility

View graphical indicators of non compliance issues across the entire virtual environment. Dashboards provide a view of the top 10 non compliant virtual environments, host and guest summaries and the virtual environment security posture.

#### • Security Hardening & Compliance Toolkits

Out-of-the-box templates address vendor and virtualization best practices, regulatory mandates and security hardening guidelines.

#### • Reporting

Out-of-the-box reporting provides virtual environment change logs, virtual host and guest summaries, storage allocation, network configuration, and more on your virtual environment.

#### • Visibility into Dormant Virtual Machines

Analyze and understand the security compliance of each virtual machine and hypervisor node as well as the relationship between virtual machines and hypervisors across the entire virtual infrastructure.

#### • Asset & License Management

Automatically discover and track virtual machines and applications, with the ability to map relationships between virtual machines and hypervisor nodes.

#### • Add Compliance Capabilities to VMware vCenter Server

By using the VMware vCenter Server Compliance plug-in, you can view compliance of your virtual environment from within VMware vCenter Server and launch Configuration Manager in context.

### vCenter Configuration Manager System Information

- **Virtual Platforms:** VMware ESX 2.5, 3.0.x, 3.5, VMware ESXi 3.5 and 4, vSphere 4
- **Guest Operating Systems, Servers:** Microsoft Windows 2000 through 2008 R2, Red Hat Enterprise Linux 2.1, 3.0, 4.0, 5.0, SUSE Linux 9-10, Solaris x86 10
- **Guest Operating Systems, Desktops:** Microsoft Windows XP through Windows 7
- **Supported Regulatory Standards & Industry Best Practices**
  - VMware Hardening Guidelines
  - Microsoft Hardening Guidelines
  - CIS Benchmarks
  - PCI DSS
  - FISMA
  - GLBA
  - HIPAA
  - DISA
  - FDCC
  - ISO 17799/27001
  - NERC/FERC
  - FFIEC
  - Sarbanes-Oxley

### Find Out More

For information or to purchase VMware products, call 877-4VMWARE (outside of North America dial 650-427-5000), or visit [www.vmware.com/products](http://www.vmware.com/products).

For detailed product information and systems requirements, please refer to additional detail online.

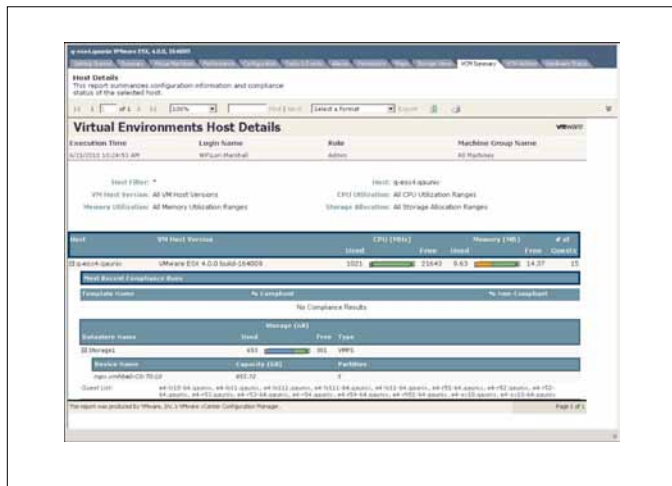


Figure 2 Configuration Manager Compliance Plug-In for vCenter.

