

# VMware Workstation 6

## The Leading Desktop Virtualization Software

### AT A GLANCE

VMware® Workstation 6.0 is the gold-standard virtualization software for desktop and laptop computers, enabling users to run multiple operating systems on a single PC. With VMware Workstation 6, users can quickly switch between different computing environments with the click of a mouse, setup multi-tier configurations and networks and easily create multiple snapshots of virtual machines.

### BENEFITS

- Reduce hardware costs by running multiple physical systems as virtual machines on a single PC.
- Increase productivity by cutting the time needed to provision, deploy and reconfigure physical machines.
- Maximize resources by accessing applications and data beyond a single PC operating system
- Eliminate risk by testing patches and application software in isolation and preserve the state of virtual machines for backup or redistribution.

### VMware Workstation 6 Advantage

No other desktop virtualization software offers the performance and capabilities of VMware Workstation. With millions of users and dozens of industry awards, only VMware Workstation offers:

- Broadest operating system support
- Best-in-class virtual machine architecture
- Most advanced feature set
- Powerful set of APIs

With VMware Workstation 6, users can create and run multiple virtual machines simultaneously on a single PC. VMware Workstation 6 supports 19 versions of Windows and 26 versions of Linux, making it an indispensable tool for IT professionals, software developers and testers, technical sales and support professionals—or anyone who needs to run multiple physical systems as virtual machines on a single desktop. Examples include:

#### IT Professionals

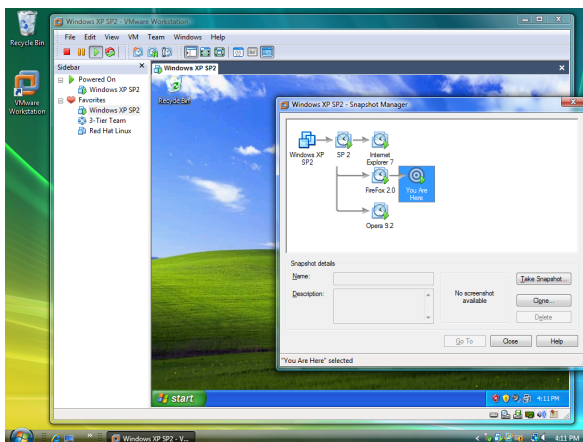
- Configure and test desktops and servers in virtual machines before deploying them to production
- Test new multi-tier applications, service packs, application updates, and OS patches on a single PC
- Host legacy applications within virtual machines, facilitating OS migrations and eliminating the need to port legacy applications
- Create a library of end-user configurations on a shared drive

#### Software Developers and Testers

- Develop and test applications on multiple operating systems on a single PC
- Connect virtual machines to simulate and test multi-tier systems
- Use multiple snapshots and debugging support to facilitate testing
- Archive test environments on file servers for easy sharing

#### Sales, Marketing and Training

- Demo or multi-tier configurations on a single laptop in a repeatable, reliable manner
- Package and deploy classroom materials in virtual machines
- Allow students to experiment with multiple operating systems, applications and tools in secure, isolated virtual machines
- Configure virtual machines to “undo” all changes at shutdown



Use VMware Workstation to take multiple snapshots of any virtual machine, and to revert back to a known, clean state or switch to an entirely different configuration of the guest operating system and its applications.

## KEY FEATURES

### How Does Workstation 6 Work?

VMware virtualization software maps physical hardware resources to the virtual machine's resources so that each virtual machine is equipped with its own CPU, memory, disks and network interface cards. No rebooting or hard-drive partitioning is required to switch between the virtual machines. Virtual machines are the full equivalent of a standard x86 machine and are able to run most Windows, Linux and Novell desktop and server operating systems.

### ACE Option Pack

As a companion to Workstation 6, VMware offers the ACE Option Pack, which enables Workstation users to create secure virtual machines (called ACEs). Mobility is one of the primary benefits of this option pack, as it enables users to securely take their desktops with them as "Pocket ACEs" on portable media devices such as USB memory sticks.

### Key Features

#### Broadest Host and Guest Operating System Support

- Runs on both Windows and Linux host operating systems and supports most desktop and server editions of Microsoft Windows, Linux, Solaris x86, Netware, and FreeBSD as guest operating systems
- Supports 32- and 64-bit host and guest operating systems
- Supports two-way Virtual SMP™ – assign one or two processors to virtual machines

#### Best-in-Class Virtual Machine Architecture

- Fully configurable – each virtual machine has configurable memory size, disks and I/O devices and support for CD, DVD, floppy and USB 2.0 devices
- Specify up to 8GB of RAM per virtual machine
- 64-bit sound driver for high-fidelity audio and video
- Easily switch between virtual machines and suspend/resume them
- Easily copy and share virtual machines by creating full and linked clones
- Convert physical into virtual machines and import virtual machine formats from Microsoft, Symantec and others

#### Advanced Network Support

- Powerful virtual networking options include Bridged, NAT, host-only and custom virtual network settings
- Built-in DHCP server, and up to 10 virtual switches, enable connection of virtual machines to each other, to the host machine and to public networks
- Specify network bandwidth and packet loss rate between virtual machines in a team

#### Richest Desktop Experience

- Configure a virtual machine to span multiple monitors, or multiple virtual machines to each display on separate monitors.
- Create shared folders and drag-and-drop, and copy-paste data between guest and host OSes
- Connect high-speed USB 2.0 devices, including webcams and iPods
- Resize the guest's screen resolution automatically to fit the size of a window or full screen, or run virtual machines in the background without using the Workstation user interface
- Map a virtual disk to a drive letter on Windows hosts
- Capture all screen activity in a running virtual machine with movie record and playback feature

#### Powerful Development and Test Features

- Debug applications in the guest OS, attach to a running process, and revert to a snapshot after the debug session has ended with the Visual Studio and Eclipse plug-in
- Capture and easily manage point-in-time copies of running virtual machines and "undo" changes with multiple snapshot feature
- Manage connected virtual machines and simulate multi-tier configurations with teams feature
- Enable remote users to connect to virtual machines from VNC clients with built-in VNC support
- Invoke any virtual machine command from scripts to automate repetitive tasks with VIX Automation API
- Experimental support for VMI 3.0 enabled paravirtualized Linux kernels
- Experimental support for record and replay of guest activity at the machine state and instruction level

#### Security and Mobility

- Package and deploy virtual machines with optional VMware ACE authoring capability, enabling encryption, network access and password control on portable media devices
- Includes VMware Player 2.0

### Product Specifications and System Requirements

For detailed product specifications and system requirements refer to the VMware Workstation 6 at: [www.vmware.com/products/ws](http://www.vmware.com/products/ws)