

# VMware vCenter Discovered Machines Import Tool User's Guide

Version 5.3.0.25

for vCenter Configuration Manager 5.4.1

This document supports the version of each product listed and supports all subsequent versions until the document is replaced by a new edition. To check for more recent editions of this document, see <http://www.vmware.com/support/pubs>.

EN-000499-01

**vmware**<sup>®</sup>

You can find the most up-to-date technical documentation on the VMware Web site at:

<http://www.vmware.com/support/>

The VMware Web site also provides the latest product updates.

If you have comments about this documentation, submit your feedback to:

[docfeedback@vmware.com](mailto:docfeedback@vmware.com)

© 2006-2011 VMware, Inc. All rights reserved. This product is protected by U.S. and international copyright and intellectual property laws. VMware products are covered by one or more patents listed at <http://www.vmware.com/go/patents>.

VMware is a registered trademark or trademark of VMware, Inc. in the United States and/or other jurisdictions. All other marks and names mentioned herein may be trademarks of their respective companies.

**VMware, Inc.**  
3401 Hillview Ave.  
Palo Alto, CA 94304  
[www.vmware.com](http://www.vmware.com)

# Contents

About This Book	5
Welcome to the Discovered Machines Import Tool	7
Prerequisites and Installation	8
Navigating the User Interface	9
Step 1: Select the Nmap Output Files	10
Step 2: Configure the Database Connection	12
Step 3: Select and Filter the Machines	13
Step 4: Select Devices	17
Step 5: Import the Machines	18
Step 6: Save the SQL Script	19
Configuring the Discovered Machines Import Tool	21
Changing the Log File Name	21
Changing the Log Level	21
Viewing Additional Information in the Selection Machines Data Grid	22
Useful Nmap Command Lines	23
OS Detection	23
Examples	23
Reference	23



# About This Book

---

This manual, *VMware vCenter Discovered Machines Import Tool User's Guide* for VCM, describes how to import discovered machines and devices into the VCM database.

This document contains the following information:

- Configuring the database connection.
- Selecting machines and devices, and importing machines.
- Configuring the application and using Nmap command lines.

Read this document and complete the associated procedures to prepare for a successful import.

## Intended Audience

The information presented in this manual is written for system administrators who are experienced Windows or UNIX/Linux system administrators and who are familiar with managing network users and resources, and performing system maintenance.

To use this information effectively, you must have a basic understanding of how to configure network resources, install software, and administer operating systems. You also need to fully understand your network's topology and resource naming conventions.

## VMware VCM Documentation

The VMware vCenter Configuration Manager (VCM) documentation consists of the VCM online Help, *Hardware and Software Requirements Guide*, *Installation and Getting Started Guide*, and other associated documents.

## Document Feedback

VMware welcomes your suggestions for improving our documentation. If you have comments, send your feedback to [docfeedback@vmware.com](mailto:docfeedback@vmware.com).

## Technical Support and Education Resources

The following technical support resources are available to you. To access the current version of this book and other books, go to <http://www.vmware.com/support/pubs>.

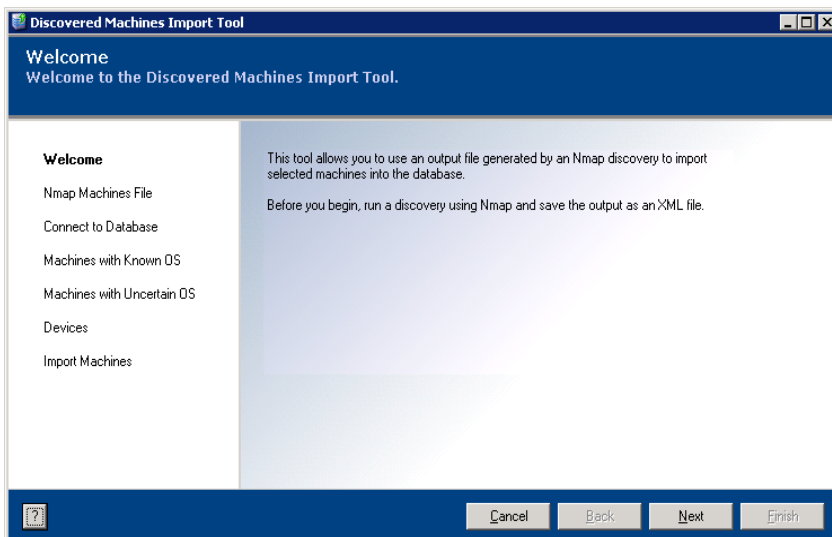
- Online and Telephone Support** To use online support to submit technical support requests, view your product and contract information, and register your products, go to <http://www.vmware.com/support>. Customers with appropriate support contracts should use telephone support for priority 1 issues. Go to [http://www.vmware.com/support/phone\\_support.html](http://www.vmware.com/support/phone_support.html).
- Support Offerings** To find out how VMware support offerings can help meet your business needs, go to <http://www.vmware.com/support/services>.
- VMware Professional Services** VMware Education Services courses offer extensive hands-on labs, case study examples, and course materials designed to be used as on-the-job reference tools. Courses are available onsite, in the classroom, and live online. For onsite pilot programs and implementation best practices, VMware Consulting Services provides offerings to help you assess, plan, build, and manage your virtual environment. To access information about education classes, certification programs, and consulting services, go to <http://www.vmware.com/services>.

# Welcome to the Discovered Machines Import Tool

# 1

The Discovered Machines Import Tool (DMIT) obtains information related to discovered machines and devices that are retrieved by Network Mapper (Nmap), and imports selected machines into the VCM database as discovered machines. After the machines are in VCM, you can begin the process of licensing and managing them.

This guide describes how to import machines discovered by Nmap into the VCM database.



The Discovered Machines Import Tool provides the following capabilities:

- Allows you to retrieve current information found in the database and compare this information with the information retrieved by Nmap.
- Provides a list of machines that exist in the database.
- Reports whether differences exist between the information retrieved by Nmap and the information in the database.

If you have access to the database, you can import machines discovered by Nmap into the database. To import discovered machines into the database when you do not have access to the database, the tool allows you to create a SQL script that contains all of the required information.

For information about Nmap commands, see the *Nmap Reference Guide* at: <http://nmap.org/book/man-briefoptions.html>.

## Prerequisites and Installation

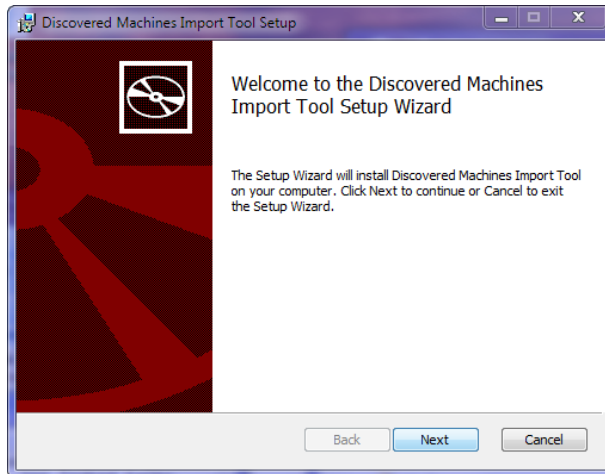
The Discovered Machines Import Tool is supported on multiple Agent platforms. For a complete list, see the *VCM Hardware and Software Requirements Guide*.

Before you can use the Discovered Machines Import Tool, your machine must have the following:

- Nmap (with WinPcap) version 5.2.1.
- VMware vCenter Configuration Manager version 4.9 or later.

### Procedure

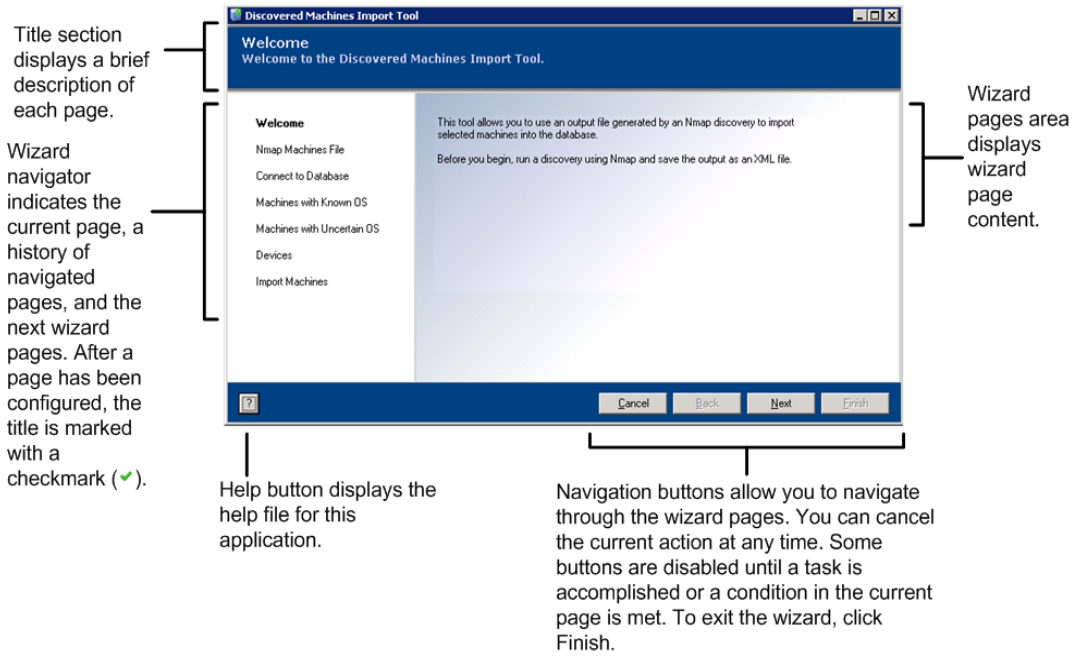
1. Locate the .msi, and double-click it to install the application.



2. Accept the license agreement.
3. Select to install the application to the default location or choose another path where you want to install it.
4. Click Install, and then complete the wizard. By default, the files will be installed to `C:\Program Files (x86)\VMware\VCM\Tools\DMIT`.

## Navigating the User Interface

When you open the Discovered Machines Import Tool, the Welcome window explains how to start the import process.




---

**IMPORTANT** To use the tool to import devices, you must have Administrator credentials.

---

## Step 1: Select the Nmap Output Files

To begin the import process, locate the Nmap file, which contains information about the discovered machines and devices.

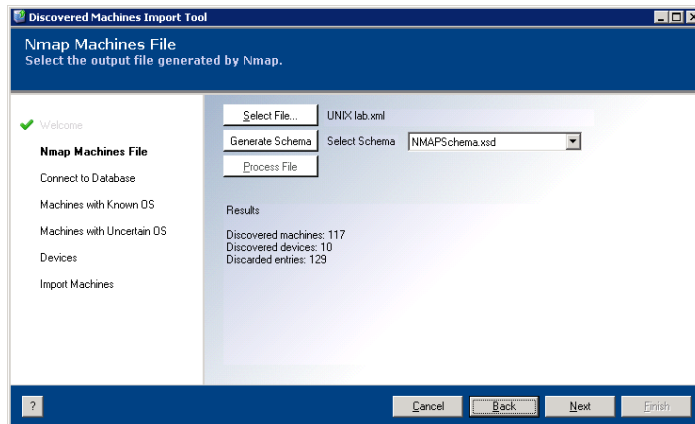
---

**IMPORTANT** You must obtain the Nmap information before continuing the import process.

---

### Procedure

1. Click **Next**. The Nmap Machines File page appears.

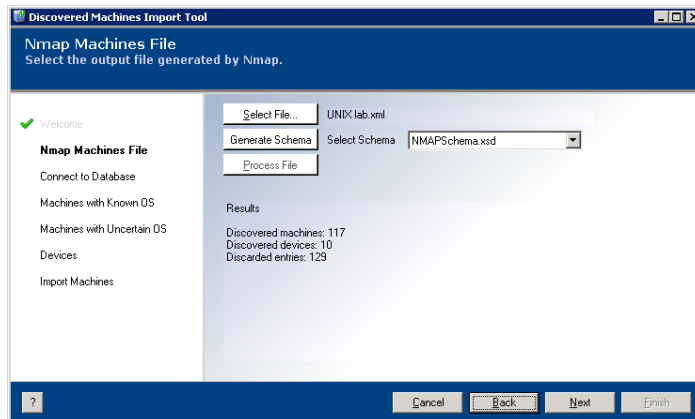


2. Click **Select file...** to specify the Nmap file to use to provide information about the discovered machines, and then choose the XML file that contains the Nmap information. The file name appears next to the button.

The Nmap file contains information related to discovered machines. It is helpful, but not essential, to know the domain name for a particular machine; if the domain name is not available but other required information is available, the tool can use the available information to parse the machines and import them into the VCM database. If the required information for the machine is not available, the machine will be discarded as indicated by Discarded Entries, and will be added to the DMIT log file.

3. Select a schema from the drop-down. The schema is used to validate the xml file being imported to ensure the tool can read it correctly. The format of the data is stored in the schema, and the data of the xml passed as an input to the tool is verified against the schema. After the xml data is validated against the schema, the tool can parse it and load the data into the VCM database.
4. Click **Generate Schema**. A standalone .xml file will be generated. Save the schema to the directory of your choice.

- Click **Process File** to process the Nmap file. When the file contains valid Nmap information, the file will be processed and information about the discovered devices will be displayed. If the selected file does not contain valid Nmap information, an error message will appear.



The results displays the number of discovered machines and devices, and the number of entries that were discarded due to lack of information.

- Click **Next** to continue the import process.

---

**IMPORTANT** By default, the DMIT application generates log messages at the ERROR level, which is useful for troubleshooting. To have the DMIT application generate log messages at the INFO level, which provides additional information for items being processed, you must configure the DMIT application prior to running it. See ["Configuring the Discovered Machines Import Tool" on page 21](#) for details.

---

## Step 2: Configure the Database Connection

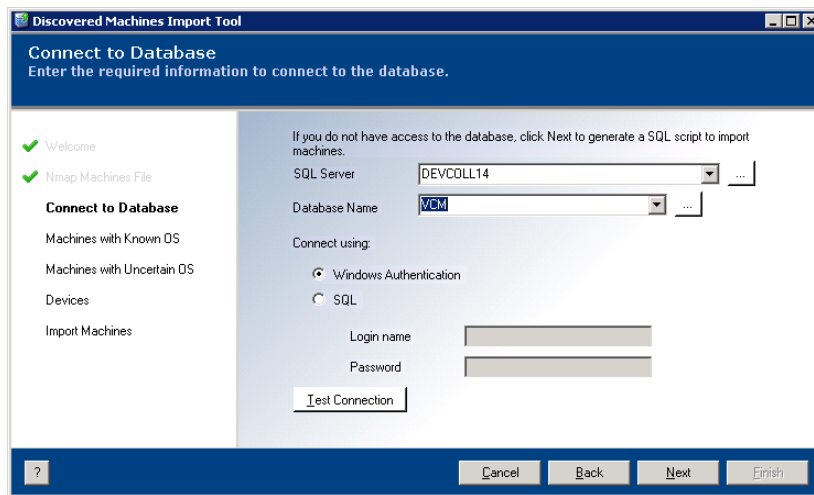
You must configure the database connection and connect to the database to obtain useful information about the machines. After configuring the database connection, you can use the tool to:

- Determine whether a machine discovered by Nmap already exists in the database.
- Determine if the information about a machine stored in the database is different or equal to the information provided by Nmap.
- Import the machines directly.

If you do not have access to the database, you must use the tool wizard to generate a SQL script. At the end of the wizard, an option appears to save the SQL script. After you have saved the script, and have access to the database, use the SQL script to import the machines into the database.

### Procedure

1. Click **Next** to continue through the wizard.



2. In the **SQL Server** text box, enter the name of the SQL Server instance. If you do not know the instance name, click the ellipsis (...) button and wait for the field to be populated or select from the **SQL Servers list**. You may need to wait several moments for the tool to obtain the SQL Servers list.
3. In the **Database Name** text box, enter the name of the VCM database. If you do not know the name of the database, click the ellipsis (...) button, select the SQL Server, and then enter your credentials. If the credentials do not enable access to the database list, the tool displays a message indicating that the database list cannot be retrieved from the selected SQL server, and that you must verify your credentials. If after entering your credentials, you still cannot access the database, click **Next** to proceed to generate a SQL script, which you can then use to import machines.

---

**IMPORTANT** If the selected database is not valid (for example, it does not contain the required tables or stored procedures), a message appears indicating that the selected database does not meet the necessary requirements. In this case, the tool will disconnect from the selected database, display a status message, and then continue through the process without a database connection.

---

4. Select the authentication mode:
  - **Windows Authentication:** Selects the Windows Authentication mode.

- **SQL:** Selects SQL authentication. You must provide a login name and password. When selecting SQL Authentication, only the login name is saved; the password is not saved to avoid any potential security risks.
5. Click **Test Connection** to verify the settings. When the connection is successful, a message indicating success appears. The connection settings will be saved and available the next time you use the tool. If the connection is not successful, a message indicating failure appears.
  6. Click **Next** to continue and save the database configuration in the configuration file (dmit.exe.config).

---

**NOTE** If you did not click **Test Connection** to attempt to connect to the database, but all of the settings needed to connect to the database are entered, a new connection will be attempted when you click **Next**. When a connection to the database has been established, the log system will log into the database using the DBE system.

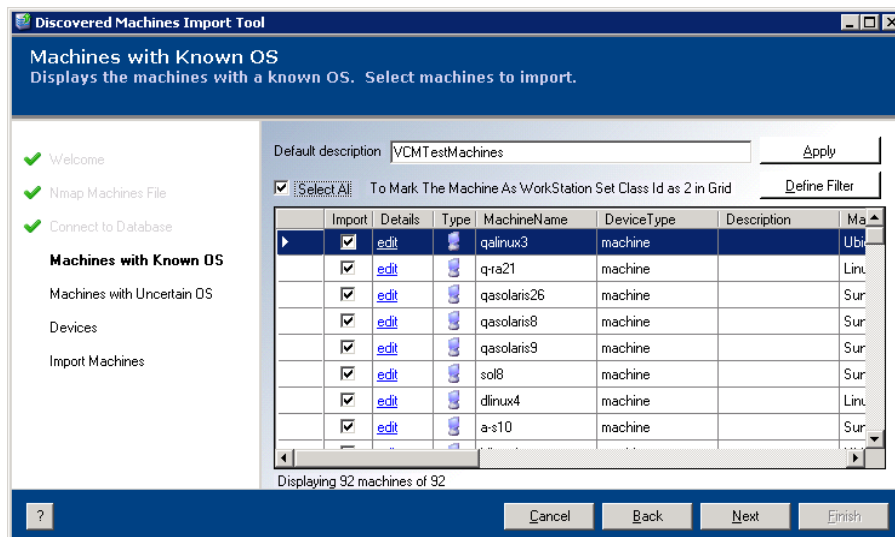
---

### Step 3: Select and Filter the Machines

You must select the machines to import into the database. Optionally, you can filter the machine list.

#### Procedure

1. Click **Next** to continue through the wizard. The Machines with Known OS wizard page appears and displays machines that have a clearly identified Operating System.



- **Default description:** Creates a description that is applied to all machines in the data grid. When entering a description in the field, you cannot use the following characters: ' " < > &.
- **Apply:** Applies the description to the selected machines.
- **Select All:** Selects all of the machines in the data grid.
- **Define Filter:** Creates a filter for the displayed machines.
- **Data Grid:** The data grid displays information about a machine discovered by Nmap. You can enter a default description and apply it to all of the displayed machines in the data grid. You can also change the description for each row.
- **Import (column):** Selects an individual machine.

- **Details (column):** Links to additional information in the database when the information retrieved by Nmap exists in the database. Possible link types are:
  - **exist:** Indicates the machine already exists in the database and matches the Nmap information.
  - **different:** Indicates the machine already exists in the database, but the Nmap information does not match.

When a connection to the database exists, detailed information is retrieved. To determine whether differences exist between the Nmap information and database fields, the tool compares the following fields:

Nmap Information	Database Fields
Machine name	[machine_name]
DomainName	[domain_name]
Port	[machine_connection_http_port]
OperatingSystem	[machine_os]
HttpProxyID	[http_proxy_id]

- **edit:** Indicates the machine is not present in the database, but that a connection to the database exists. Clicking this link allows you to modify the Nmap information before the machine is inserted into the database.

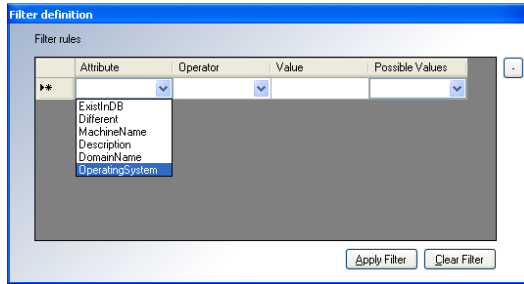
When a link exists in the Details column, you can click the link to view information in the database for that machine. The **Machine information** dialog box appears and displays information retrieved by Nmap from the database. You can modify the Nmap information. If the link indicates the discovered values and database values differ, the differences will be highlighted.

The screenshot shows a dialog box titled "Machine information" with two columns: "Discovered Values" and "Database Values". The fields are as follows:

Field	Discovered Values	Database Values
Name	qalinux3	
Description		
Domain Name	qaurix	
Port	26542	
Operating System	Linux 2.4.X	
HTTPProxy	0	

Buttons: Accept, Cancel

- **Discovered Values:** Displays information for machines retrieved by Nmap. Some of this can be modified.
  - **Database Values:** Displays information about the machine retrieved from the database.
  - **Accept:** Stores modifications in the database when all of the selected machines are imported.
2. Select the machines you want to import. You must select one or more machines to continue through the process. If you do not select any machines, the wizard will still allow you to navigate through the pages, but you will not be able to complete the wizard.
  3. To filter the machine list, define a filter. Click **Default Filter**. The **Filter Definition** dialog box appears.

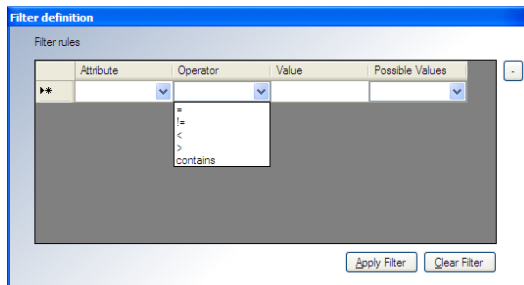


- To add a new filter rule, click the Attribute column drop-down arrow and select the attribute. The drop-down list displays the attributes used to filter the machines. Some of these attributes are predefined values. For example, the attribute labeled "Different" indicates differences between the Nmap information and the database information. Possible values are Yes/No.

---

**NOTE** When defining filters, text entries are not case sensitive. Wildcards are supported by using an asterisk (\*). The wildcard is part of the "contains" operator, and is entered in the Value field

---



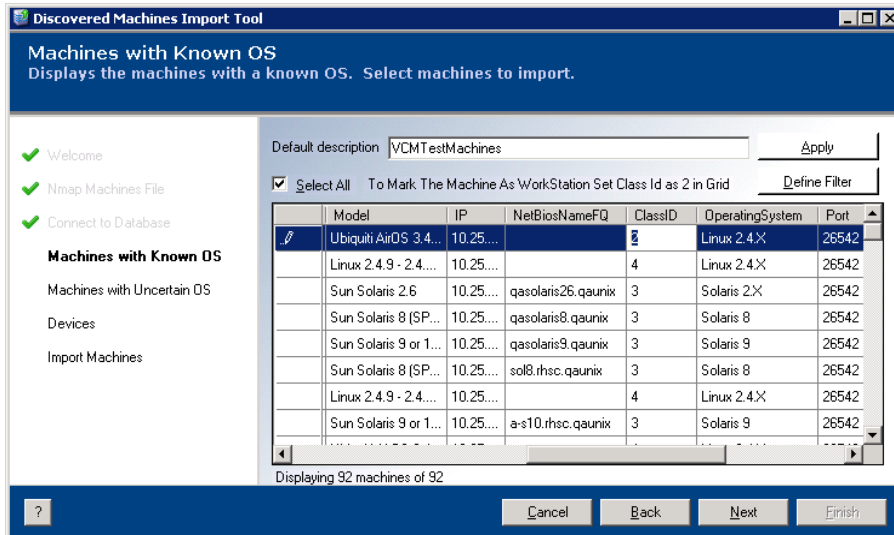
- To add an Operator to the filter rule, click the Operator drop-down arrow and select the operator. Possible operators are:

---

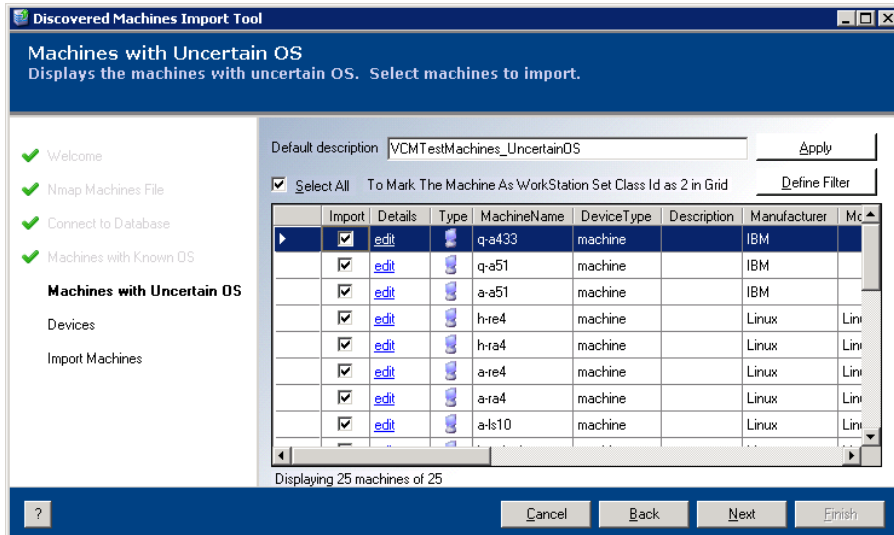
Operator	Value of Attribute
=	Must be equal to the value defined in the Value Column.
!=	Must be not equal to the value defined in the Value Column.
<	Must be less than the value defined in the Value Column.
>	Must be greater than the value defined in the Value Column.
contains	Contains a value defined in the Value Column. Wildcards are supported by using an asterisk (*). The wildcard is part of the "contains" operator, and is entered in the Value field.

---

- In the Value field, enter a value for the filter. Some attributes have pre-defined values. To view those values, click the Possible Values drop-down.
- To set a machine as a workstation, select the machine, scroll to the ClassID column, click in the field, and then enter 2.



- Click **Next**. The Machines with Uncertain OS wizard page appears and displays machines on which the Operating Systems were not fully identified. The value displayed for each machine's Operating System is the most accurate value assigned by Nmap.



- Select the machines you want to import.

## Step 4: Select Devices

The Devices page displays the devices discovered in the Nmap file.

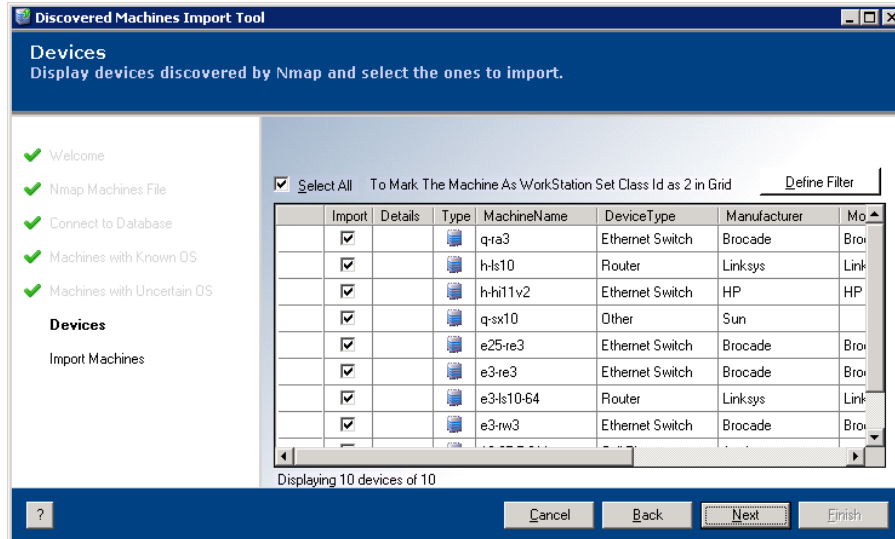
---

**IMPORTANT** To import devices, you must have Administrator credentials. If you do not have Administrator credentials, the Discovered Machines Import Tool will display a message indicating the current credentials are not sufficient, and the Devices page will be disabled.

---

### Procedure

1. Click **Next**. The Devices page appears.



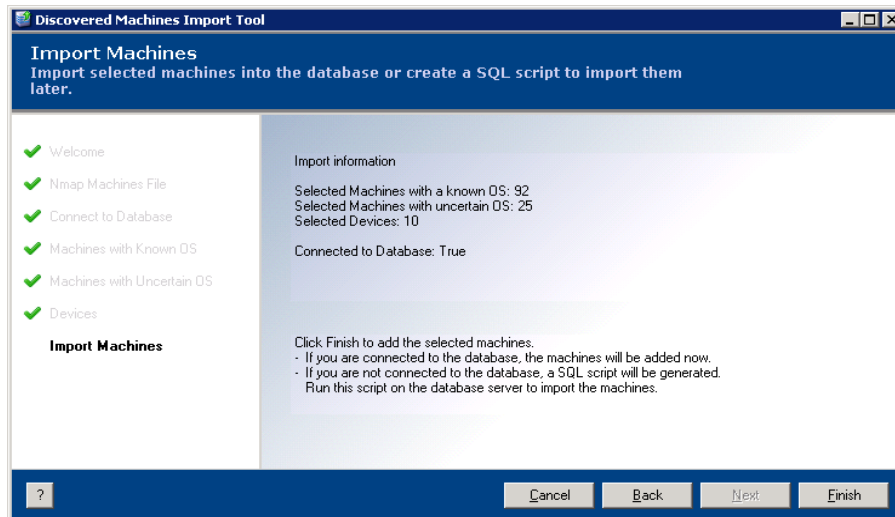
2. Select the devices to import. Devices can include any supported equipment such as phones, switches, hubs, routers, firewalls, etc. A complete list of devices is contained in DeviceID.xml, which is stored in C:\Program Files (x86)\DMIT by default, or in the folder where you installed the application software.
3. Define any filters, and then click **Next** to continue.

## Step 5: Import the Machines

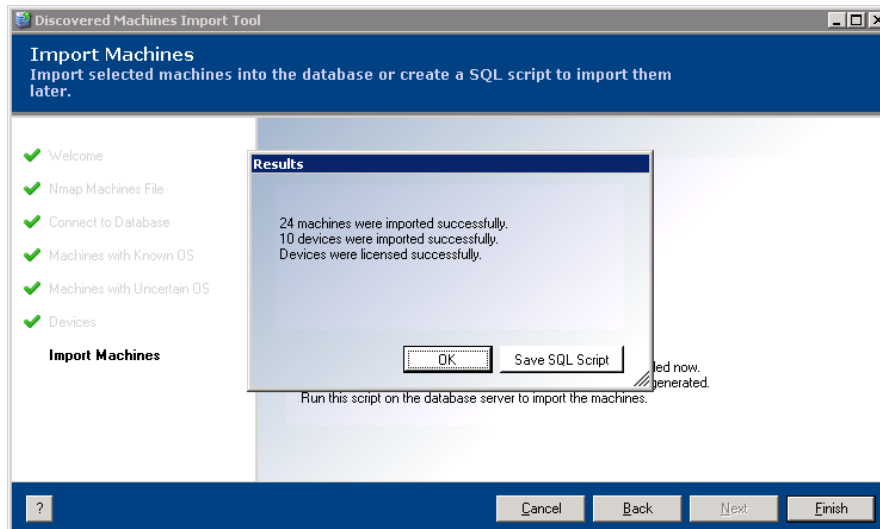
After all previous steps are complete, you can import the selected machines. The final page displays information about the selected machines and devices to be imported.

### Procedure

1. Confirm the information on the final page of the wizard is correct.



2. If the information is not correct, return to the previous pages and make any corrections.
3. Click **Finish** to import the machines and any devices.
4. The wizard displays the status of the import process. During the import process, if a connection to the database exists, all of the selected machines will be added. If a connection does not exist, on the last page of the wizard you must save the generated SQL script, and then after a connection to the database is established run the script in either SQL Query Analyzer (for SQL Server 2000) or SQL Server Management Studio (for SQL Server 2005).
5. When the process completes, the **Results** dialog box appears displaying a summary of the machines and devices that imported successfully, and whether the devices were licensed successfully.

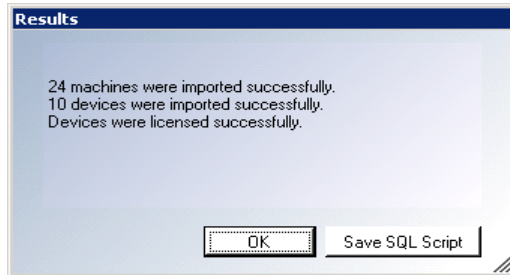


## Step 6: Save the SQL Script

In cases where a connection to the database has not yet been established, save a copy of the generated SQL script to run after the connection to the database is made.

### Procedure

1. The Results dialog box may indicate that the tool is not connected to the database.



2. To save the script, click **Save SQL Script**. To close the dialog box without saving the SQL script, click **OK**.
3. Click **Finish** to complete the process of importing the machines.



# Configuring the Discovered Machines Import Tool

# 2

You can configure various options in the Discovered Machines Import Tool application.

---

**IMPORTANT** If you change the options in the DMIT application, you must follow all of the recommendations listed here. Do not change any setting that is not mentioned in this document.

---

All of the settings for the DMIT application are configured in the `dmit.exe.config` XML file. To view the various sections in this file, use an XML editor of your choice.

## Changing the Log File Name

1. Open the `dmit.exe.config` file.
2. Locate the section named: `<log4net>`
3. Locate the sub-section named: `<appender...>`
4. Locate the parameter defined as:  

```
<param name="File" value="dmi.log" />
```
5. Replace the current value, `dmi.log`, with your new path and filename. For example: `c:\newdmi.log`
6. Restart the application to apply the changes to the settings.

---

**NOTE** When a connection to the database has been established, the DMIT application logs information to the VCM database. If a connection has not been established, the application writes information to a local log file.

---

## Changing the Log Level

1. Open the `dmit.exe.config` file.
2. Locate the section named: `<root>`
3. Locate the sub-section named: `<level... />`
4. Change the value to the log level required. You can use the following levels: ERROR, WARN, INFO, DEBUG, OFF, FATAL, or ALL. The default is ERROR. For example:  

```
<level value="ERROR" />
```
5. Restart the application to apply the changes to the settings.

## Viewing Additional Information in the Selection Machines Data Grid

To view additional information about the discovered machines, on the Selection Machines wizard page, follow these steps:

1. Open the `dmitt.exe.config` file.
2. Locate the section named: `<appSettings>`. The settings resemble:

```
<appSettings>
  <add key="NMAPSchemaFile" value="NMAPSchema.xsd" />
  <add key="transformFileForUser" value="ecm_sp_data_load_xml.xslt" />
  <add key="transformFileForApp" value="ecm_sp_data_load_xml_group.xslt" />
  <add key="userGuideFileName" value="Discovered Machines Import Tool User Guide.pdf" />
  <add key="MachineClassTypeFile" value="MachineClassType.xml" />
  <add key="MachineOSFile" value="MachineOS.xml" />
  <add key="SupportedOSFile" value="SupportedOS.xml" />
  <add key="SupportedDevices" value="DeviceID.xml" />
  <add key="columnsToHide" value="ExistInDB,DeviceTypeID, Accuracy,Different, Selected, Dea
  <add key="filterEntries" value="ExistInDB|yes|no, Different|yes|no, MachineName, Descrip
  <add key="SQLServerName" value="TSSO" />
  <add key="DataBaseName" value="ECH" />
  <add key="AuthenticationType" value="windows" />
  <add key="SQLLogin" value="" />
  <add key="SQLTimeout" value="300" />
</appSettings>
</configuration>
```

The `SQLTimeout` setting is used to determine the timeout for several SQL operations, including connecting to the database, retrieving additional information from the database, and importing the machines and devices into the database. The `SQLTimeout` setting is seconds.

3. Locate the sub-section named: `<add key="columnsToHide"...">`. This setting is a list separated by commas, and specifies which columns will be hidden in the data grid. The current values are shown here, with default values marked with an asterisk (\*):

Machine Name	Platform ID
Selected *	MachinePlatformID *
DateDiscovered *	OperatingSystem
ExistInDB	Port
Accuracy *	HttpProxyID *
Different *	ConnectionName
DeviceType	DomainName
Description	DomainTypeID *
IP	ProtocolTypeID *
NetBiosNameFQ	ConnectionIPAddressInternal *
ClassID *	ConnectionIpAddressExternal *
OSID *	

4. To display additional information, delete entries from the list. For example, if you want to display the `ProtocolTypeID`, delete this entry from the list. If you want hide a column in the data grid, add the column name to be hidden, such as `DomainName`.
5. Restart the application to apply the changes.

# Useful Nmap Command Lines

---

The syntax for using Nmap is as follows:

```
nmap [ <Scan Type> ... ] [ <Options> ] { <target specification> }
```

## OS Detection

- `-O`: Enables OS detection. Output scan is in normal, XML, `sI`, `rIpt kIddi3`, and Grepable formats, respectively, to the given filename.

OUTPUT:

```
-oN/-oX/-oS/-oG <file>
```

- `-R`: Specifies DNS resolution for all targets. This option instructs Nmap to always perform reverse DNS resolution on the target IP addresses. Reverse DNS is typically performed only against responsive (online) hosts.

## Examples

```
nmap.exe -O -R -oX c:\nmapoutput.xml 10.30.200.45
```

```
nmap -O -R -oX c:\myOutput2.xml 10.*0.0.*
```

## Reference

For further information about the Nmap commands, see the *Nmap Reference Guide* at: <http://nmap.org/book/man-briefoptions.html>

