



CRIS Deploys Future Ready Cloud Infrastructure For Improved Business Agility



INDUSTRY
Government

HEADQUARTERS
New Delhi, India

Established in 1986, CRIS (Centre for Railway Information Systems) is at the forefront of the IT transformation that is powering the digitization of the Indian Railways. Be it ticketing, passenger inquiries, or revenue collection, the organization has successfully developed and maintained complex IT systems to serve various functional areas of the Indian Railways. This has helped the railways to digitally transform its business, whether it is servicing the travel needs of over two crore passengers every day or monitoring 2.8 lakh wagons spread across India.

Given the scale of operations, the delayed or non-availability of IT resources was identified as a challenge by CRIS because it slowed down the roll-out of new applications developed for the Indian Railways. As a result, CRIS sought to consolidate its siloed IT infrastructure and modernize its data center with a future ready technology platform. VMware partnered with SISL Infotech Pvt Ltd to set-up an on-premise cloud for CRIS, which would provide the flexibility to gradually connect with other public cloud service providers to cater to its increasing IT demands.

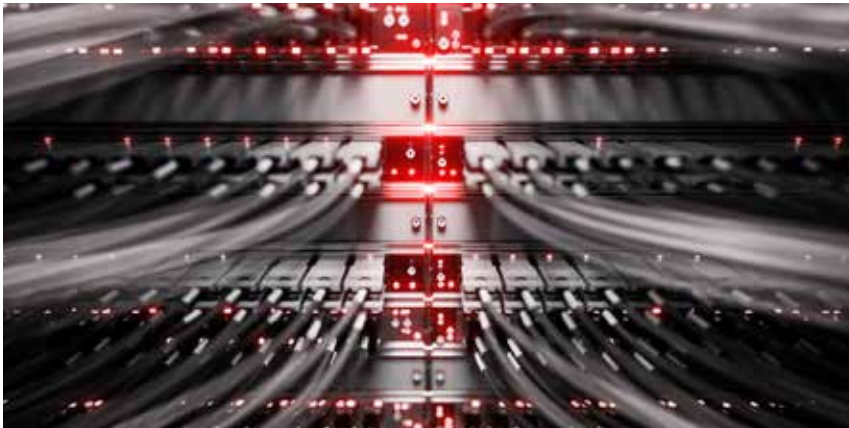
Business needs

- Standardize and consolidate its huge IT infrastructure footprint with public cloud integration to ensure IT resource scalability and availability.
- Reduce overall data center footprint and lower the costs for maintaining a massive IT infrastructure.
- Gain control and visibility across all projects through a centrally managed, automated IT infrastructure.
- Facilitate on-demand resource allocation since setting up hardware resources for new projects required going through the procurement cycle for new IT hardware, which at times would take months to complete.

“VMware solutions have helped in setting up a fully automated cloud architecture that will not only decrease the time taken for the launch of complex IT applications but also reduce our capital expenditures with an on-premise cloud infrastructure.”

SUNEETI GOEL
CHIEF PROJECT ENGINEER (CPE),
PASSENGER RESERVATION SYSTEM
(PRS), CENTRE FOR RAILWAY
INFORMATION SYSTEMS (CRIS)





Impact

- Seamless cloud deployment - VMware Professional Services held deep-dive discussions with the customer to gain granular insights, which helped in successful solution implementation.
- Flexible, agile, and scalable infrastructure that also facilitates the development of cloud-native applications.
- Improved go-to-market time for launching new applications with on-demand resource allocation has reduced resource provisioning time from months to just 25 minutes.
- Reduced overall cost of ownership and freed up valuable data center real estate due to IT infrastructure consolidation.
- Enhanced manpower optimization has resulted in a single team supervising the entire IT infrastructure and serving requests across the organization. This was previously done by three different teams who took responsibility for the system, storage, and network infrastructure.

STRATEGIC IT PRIORITIES



Multi-Cloud



Virtual Cloud Network

VMWARE FOOTPRINT

VMware vRealize® Suite Enterprise
VMware vSphere® Enterprise Plus Edition™
VMware NSX® Data Center
VMware vRealize® Network Insight™
VMware vCenter® Server
VMware Professional Services



For improved business agility and future preparedness with a robust and scalable cloud set-up [@amofficialCRIS](#) collaborated with [@VMware](#)