

# VMware App Launchpad



## About VMware App Launchpad

New solutions and services become innovative grounds for businesses in building differentiated services and products. But there are more factors to consider than the task at hand. VMware App Launchpad liberates your developers from the hassles of cloud complexity.

The App Launchpad is an app platform-as-a-service offering that lays out a self-service portfolio of pre-configured, out-of-box VMware Marketplace & ISV apps from VMware Marketplace. With a single click, developers can deploy full-stack apps without the need to manage or know anything about the underlying infrastructure.

With the App Launchpad supporting your applications from sources like VMware Marketplace, Custom Apps, and Helm Chart Repositories, you can:



Launch pre-curated applications from the self service catalog of supported Marketplace solutions



Publish your own applications in a custom catalog, for your organization users



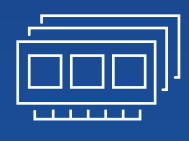
Leverage Helm repositories for your container apps

Service providers can provision VMware App Launchpad service through the VMware Cloud Partner Navigator.

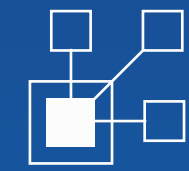
## Key Features:



Global Catalog Management delivering on-click application deployments with Multi-cloudendpoint support that unifies app deployment to VMware-based clouds and supported hyperscale endpoints with VMware Cloud Director service, expanding the availability to service providers on VMCA.



App Launchpad service accelerates AI developments through the NVIDIA NGC catalog, so developers can deploy HPC workloads onto vGPU enabled Kubernetes clusters.



With new global cloud catalog management, Cloud providers can maintain catalogs in cloud synchronized seamlessly across site catalogs in VMware Cloud Director instances and supported endpoints.



Enhanced flexibility supports attaching any Kubernetes clusters across the network. Tenant administrators can attach Kubernetes clusters running on public networks, access restricted networks, or isolated networks. Enabling tenant users to deploy helm chart applications to any available Kubernetes cluster. Providers can offer 'Bring your own Cluster' solutions to their customers.



Customizable UI that gives functional and visual uniformity across the organization with enhanced application management capability.



Users can deploy container workloads to Tanzu supported endpoints within their Multi-cloud Kubernetes (TKGm) clusters.

## 1. Why should you care about a developer-ready cloud?

Keep customers' modern workloads on your VMware cloud infrastructure

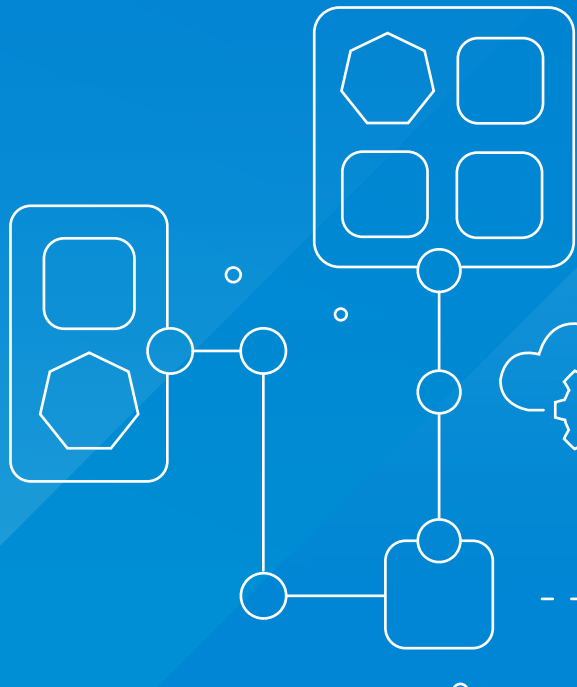
Up-level your cloud offering from the infrastructure layer to the developer layer

Accelerate your business with VMware's fastest-growing products

Tap into the \$2.7B application container market

Expand business with what your customers want: Modernized applications

## 2. Why do Cloud Provider customers need to consider a cloud native approach?



Increased developer productivity with a multitude of pre-curated, secure application catalogs

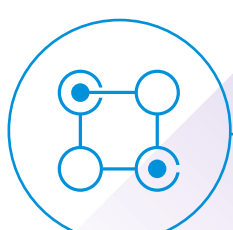
Agile and enhanced automation for rapid application deployments

Orchestrate quickly application updates using the tools developers need for container based applications

## 3. How can Cloud Providers monetize a developer-ready cloud?



Target developer and DevOps personas



Attract modern cloud workloads onto your infrastructure



Offer applications as a service (A-aaS) supporting modern applications



Deliver simple, 1-click application deployment for faster development with VMware Marketplace, third party, custom applications

## 4. Become developer-ready.



### Pre-packaged apps as a Service:

Offer VMware Marketplace to developers and DevOps to create and run cloud-native applications.

Offer custom app catalogs and NVIDIA NGC Catalog for AI applications

Try App Launchpad today!

