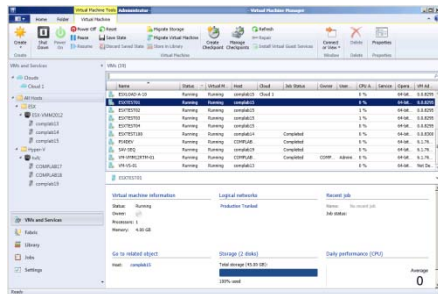


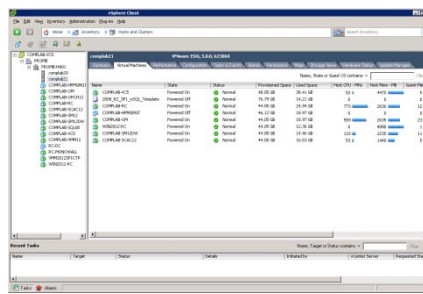
2. Not a “Single Pane Of Glass” Interface; vCenter Still Required

SCVMM NOT a “single pane of glass” interface for vSphere

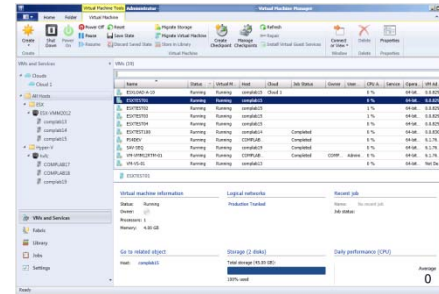


SCVMM Console

Full vCenter Server installation required to manage vSphere



vCenter Console



SCVMM Console

- Administrators will continue to rely on native VMware interfaces for many common management and configuration tasks, like:
 - Configuring vSphere hosts, clusters, and resource pools
 - Provisioning storage, networking
 - Deploying Linux VMs from templates
 - Installing VMware Tools
 - Hot-expanding virtual disks and other vSphere-specific VM capabilities

It makes little sense for vSphere administrators to use two separate interfaces to manage their VMware environment when vCenter Server alone is more than sufficient.