

## Why VMware & Wipro



### Accelerated IT Transformation

Extend and scale traditional enterprise data center capabilities to increase competitiveness, reduce time-to-market, and drive business agility



### Empowered Productive Users

Deliver simple, agile, and digital workplace solutions for anywhere, anytime, any-device access to business applications and data



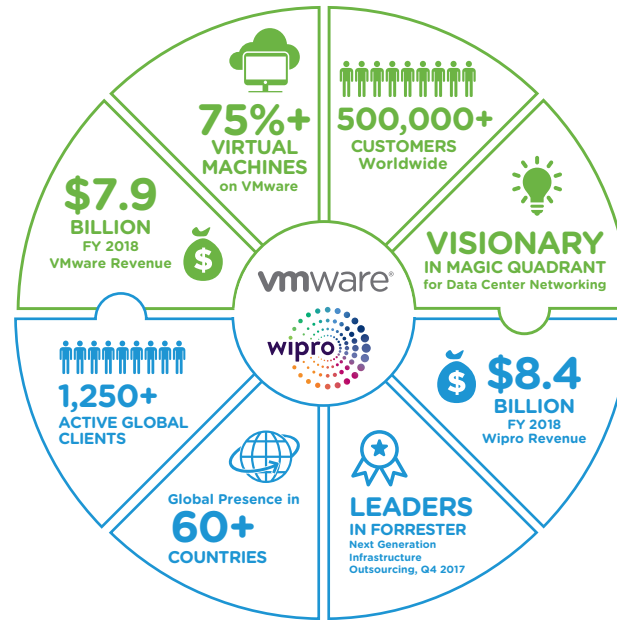
### Global Partner for VMware Cloud on AWS

Transforming customers cloud journey for better business outcomes



### Future-Ready End to End Cloud Lifecycle Services

Bots-driven cloud assessment, automated migration and machine learning driven managed services



## Joint Customer Wins

### LEADING INGREDIENTS MANUFACTURER

Enterprise ITaaS with self service provisioning in **30 minutes**

### LEADING PROVIDER OF MAIL PROCESSING SERVICES

75 DCs consolidated to 6 with **30% cost savings**

### MAJOR EUROPEAN UTILITY

Consolidation of IT operations across 80 holding companies **26% cost savings over 7 years**

### MAJOR FINANCIALSERVICE

**75% cycle time** reduction for application releases

## VMware & Wipro Joint Solutions

### BoundaryLess Data Center (BLDC) Hybrid Cloud

- Drive Digital transformation through multi cloud self-service with capability to deliver any application on any device, any cloud
- End to End cloud life cycle services from Wipro powered by Private Cloud and VMware Cloud on AWS in conjunction with AWS native services

### BoundaryLess Data Center (BLDC) Private Cloud/SDDC

- 2-8 X faster time to market leveraging industry leading VMware SDDC platform
- VMware Validated Design (VVD) Tested in Wipro global COE and certified by VMware
- Provision of infrastructure and applications in minutes through readymade blueprints

### LiVE Workspace™

- An intelligent, collaborative and mobile workspace that enables secure access, anywhere, anytime, with any device, leveraging VMware Workspace One
- On-demand workplaces that are available on-premise, on-cloud or in a hybrid model
- Omni-channel mobile-first service desk and support services
- Cognitive Support and VPA libraries for applications and infrastructure through Wipro HOLMES™

