

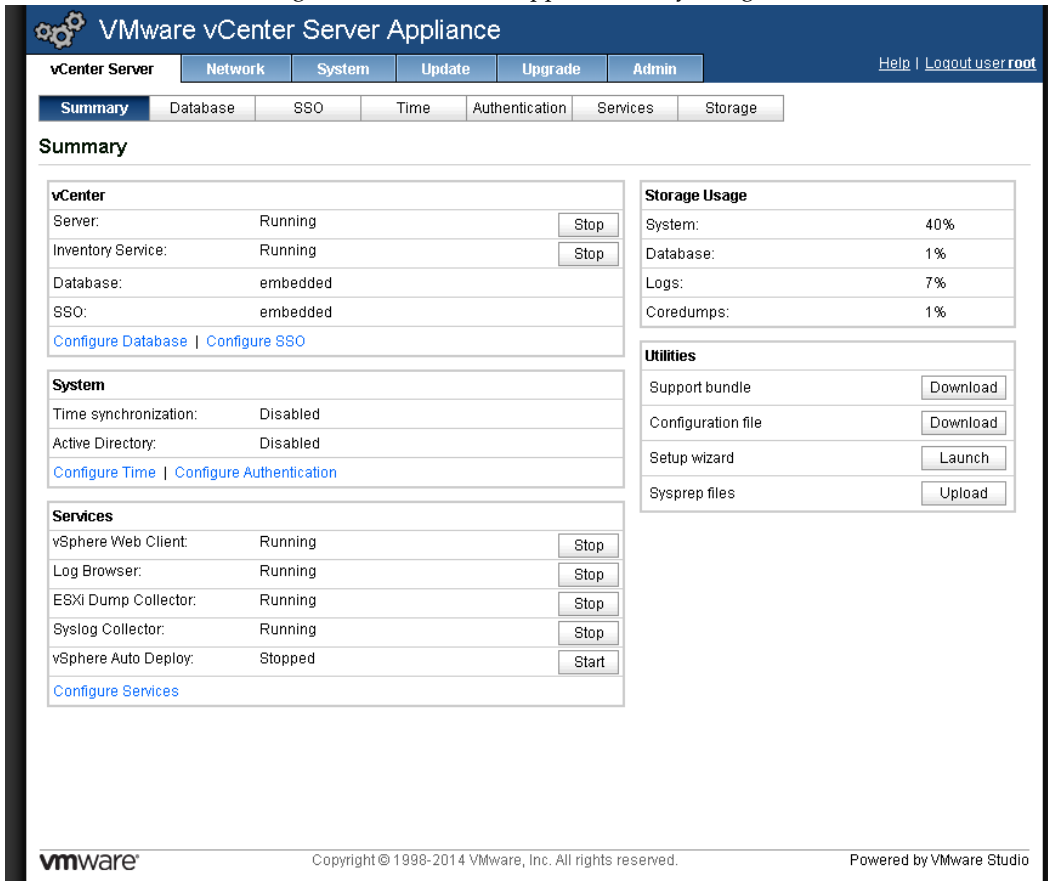
Comparing the Configuration of vCenter Server Appliance 5.5 and 6.0

vCenter Server Appliance 6.0

In VMware vSphere® 6.0 the Virtual Appliance Management Interface (VAMI) of the VMware vCenter Server™ Appliance™ is no longer available. The goal of this technical note is to help you transition from the vCenter Server Appliance 5.5 to the vCenter Server Appliance 6.0. The focus of this document is the configuration options of the vCenter Server Appliance.

vCenter Server Appliance 5.5 VAMI Configuration Options in vCenter Server Appliance 6.0

You can initialize and configure vCenter Server Appliance 5.5 by using the VAMI.



If you are currently configuring vCenter Server Appliance 5.5 by using the VAMI, you can perform most of the configuration tasks in vCenter Server Appliance 6.0 in one of the following ways:

- Configuring during the deployment of the appliance
- Using the vSphere Web Client
- Using the appliance shell
- Using the Direct Console User Interface (DCUI)

The configuration tasks that you can perform with vCenter Server Appliance 5.5 can also be performed with vCenter Server Appliance 6.0. For more information about these tasks, see the [vCenter Server Appliance Configuration](#) documentation.

Table 1. vCenter Server Appliance 5.5 VAMI Configuration Options in vCenter Server Appliance 6.0

Task	vCenter Server Appliance 6.0	More Information
Configure database settings	Available only during initial configuration	You can use the bundled PostgreSQL database that is included in the vCenter Server Appliance, which supports up to 1,000 hosts and 10,000 virtual machines.
Configure network settings	vSphere Web Client and DCUI	The vCenter Server Appliance can obtain networking settings from a DHCP server or use static IP addresses. You can change the IPv4, IPv6, and DNS configuration.
Start or stop vCenter Server	vSphere Web Client	In the vSphere Web Client, you can start, stop, and restart the services that are running in the vCenter Server Appliance. You can find the list of services by clicking System Configuration on the Home page of the vSphere Web Client.
Start or stop ESXi services	vSphere Web Client and appliance shell	You can start, stop, restart, and configure VMware ESXi™ services such as VMware vSphere® ESXi™ Dump Collector and VMware vSphere® Auto Deploy™.
Change the vCenter Single Sign-On mode	Available only during initial configuration	You can deploy vCenter Server Appliance 6.0 with an embedded VMware Platform Services Controller™ or an external Platform Services Controller. If you deploy the vCenter Server Appliance with an embedded Platform Services Controller, after the deployment, you cannot change it to a vCenter Server Appliance with an external Platform Services Controller, and the reverse. In vCenter Server Appliance 6.0, the VMware Platform Services Controller group of infrastructure services contains VMware vCenter™ Single Sign-On™, License Service, Lookup Service, and VMware Certificate Authority.
Change the administrator password	DCUI and appliance shell	To prevent unauthorized access to the vCenter Server Appliance DCUI, you can change the password of the root user of the Linux OS.
Enable or disable SSH administrator login	vSphere Web Client, DCUI, and appliance shell	You can use the appliance Direct Console User Interface to enable local and remote access to the appliance Bash shell.

Table 1. vCenter Server Appliance 5.5 VAMI Configuration Options in vCenter Server Appliance 6.0

Task	vCenter Server Appliance 6.0	More Information
Configure inventory size	Available only during initial configuration	<p>You can select the appliance size and the vSphere inventory that you want to manage with the vCenter Server Appliance only during the deployment. The maximum size of the vCenter Server Appliance is with 16 CPUs, 32 GB of memory for a maximum of 1,000 hosts and 10,000 virtual machines.</p> <p>If your vSphere inventory size grows, to change the hardware settings of the vCenter Server Appliance after deployment, you must power off the appliance, use the vSphere Client to connect to the ESXi host on which the appliance resides, and change the hardware settings manually. For more information, see <i>vSphere Administration with the vSphere Client</i>.</p>
Configure vSphere ESXi Dump Collector	vSphere Web Client	You can configure the default port on which the core dump server communicates and the repository size of the vSphere ESXi Dump Collector.
Configure vSphere Auto Deploy settings	vSphere Web Client	You can change the default configuration properties of the vSphere Auto Deploy service: cache size, log level, management port, and service port.
Configure logs on NFS storage	Not available	You cannot configure the NFS storage in vCenter Server Appliance 6.0.
Configure authentication settings (AD)	vSphere Web Client and Bash shell	<p>In vCenter Server Appliance 6.0 you can join a Platform Services Controller appliance or a vCenter Server Appliance with an embedded Platform Services Controller to an Active Directory domain.</p> <p>If you want to set up an Active Directory on the Platform Services Controller appliance before the vCenter Server Appliance joins the Platform Services Controller, you can use the Bash shell CLI method by using <code>/opt/likewise/bin/domainjoin-cli</code>.</p>
Log files storage configuration	vSphere Web Client	You can redirect the vCenter Server Appliance log files to another machine.
Configure time synchronization settings	Appliance shell	When you deploy the vCenter Server Appliance, you can choose the time synchronization method to be either by using an NTP server or by using VMware Tools™. If the time settings in your vSphere network change, you can edit the vCenter Server Appliance and configure the time synchronization settings by using the commands in the appliance shell.
Upload sysprep files to the appliance	Bash shell	<p>In vCenter Server Appliance 6.0, you can upload sysprep files only by using the Bash shell. You can change the default shell of the appliance to Bash by running the following commands:</p> <pre>shell.set --enabled true shell chsh -s "/bin/bash" root</pre>

Configuring the vCenter Server Appliance 6.0

You can access vCenter Server Appliance 6.0 and edit its settings in three ways. You can edit some settings only during the deployment of the vCenter Server Appliance.

Table 2. Configuration Settings in vCenter Server Appliance 6.0

vSphere Web Client	Appliance Shell	DCUI	vCenter Server Appliance Deployment
Join or leave AD domain	Configure the network	Change the password of the root user of the Linux OS.	Configure the database settings
Add users to the SystemConfiguration.BashShellAdministrators Group	Set enabled state of console-based controlled CLI (TTY1)	Restart the network	Change the vCenter SSO mode
Use plug-ins	Set enabled state of the Direct Console User Interface (DCUI TTY2)	Enable access to the appliance Bash shell	Configure the inventory size
Enable local login	Set enabled state of Bash shell, that is, access to Bash shell from within the controlled CLI.	Access the appliance Bash shell	
Enable SSH login	Set enabled state of the SSH-based controlled CLI.	VMware vCenter Server™ support bundle	
Enable Bash shell access	Manage local user accounts		
Edit the DNS and IP address settings	Configure the NTP settings		
Edit the firewall settings	View basic appliance resource use		
Edit the startup settings of services	Start/Stop/Restart Services		
Start, stop, or restart services	Access plug-ins		
View the health status of services			
Edit the settings of services			
Export a support bundle			

Configuring the vCenter Server Appliance 6.0 During the Deployment of the Appliance

Some vCenter Server Appliance configuration settings can be configured only during the deployment of the appliance. For more information about the deployment of the appliance, see [Deploying the vCenter Server Appliance](#).

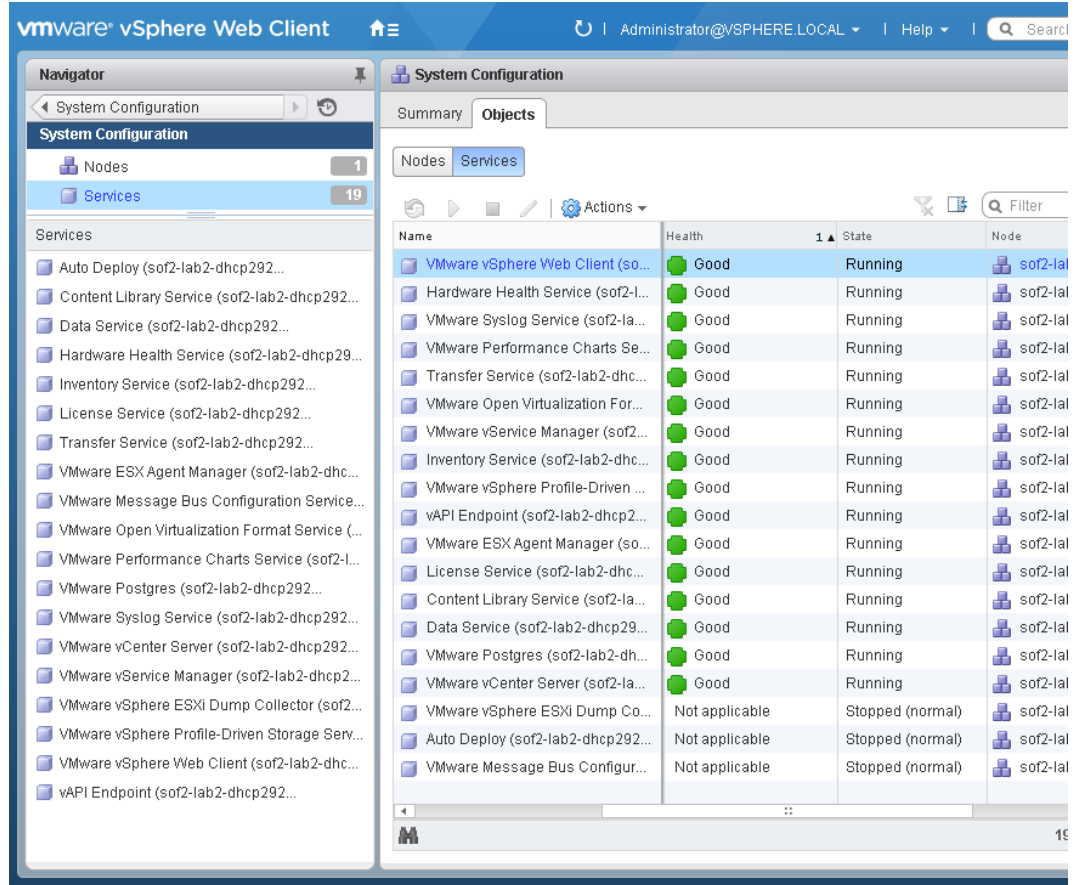
- Configure the database settings.
- Deploy vCenter Server Appliance 6.0 with an embedded Platform Services Controller or an external Platform Services Controller.
- Select the vCenter Server Appliance size depending on the vSphere inventory that you plan to manage.

Configuring the vCenter Server Appliance 6.0 by Using the vSphere Web Client

After you deploy the vCenter Server Appliance, you can log in to the vSphere Web Client and edit the appliance settings. Use the vSphere Web Client to perform the following tasks:

- Add a user to the SystemConfiguration.BashShellAdministrators Group. To enable access to the vCenter Server Appliance Bash shell by using the vSphere Web Client, the user you use to log in must be a member of the SystemConfiguration.BashShellAdministrators group. By default, this group is empty and you must add a user to the group manually. For more information, see [Add a User to the SystemConfiguration.BashShellAdministrators Group](#).
- Enable local and remote access to the appliance. For more information, see [Edit Access Settings to the vCenter Server Appliance](#).
 - Enable local login
 - Enable SSH login
 - Enable Bash shell access
- Edit the DNS settings and specify which DNS server to use. You can also edit the IP address settings of the vCenter Server Appliance. For more information, see [Edit the DNS and IP Address Settings of the vCenter Server Appliance](#).
- Edit the firewall settings of the vCenter Server Appliance and create firewall rules. By using the firewall rules, you can allow or block the traffic between the vCenter Server Appliance and specific servers, hosts, or virtual machines. You cannot block specific ports. You block all the traffic. For more information, see [Edit the Firewall Settings of the vCenter Server Appliance](#).
- Manage the services that are running in the vCenter Server Appliance. For more information, see [Start, Stop, or Restart Services in the vCenter Server Appliance](#).
 - The Message Bus Configuration, vSphere ESXi Dump Collector, and vSphere Auto Deploy services are optional services in vCenter Server Appliance 6.0 and they are not running by default. You can edit the startup settings of these services by using the vSphere Web Client.

- You can start, stop, or restart the services that are running in the vCenter Server Appliance.



- View the health status of the services running in the vCenter Server Appliance.
- Edit the settings of the services running in the vCenter Server Appliance. Editable services are vSphere Auto Deploy, Content Library Service, Hardware Health Service, Transfer Service, VMware Open Virtualization Format Service, VMware Syslog Service, vSphere ESXi Dump Collector Service, and vAPI Endpoint.
- If you have deployed the vCenter Server Appliance with an embedded Platform Services Controller, you can export a support bundle containing the log files for a specific product included in the vCenter Server Appliance or for a specific service in the Platform Services Controller. If you have deployed the vCenter Server Appliance with an external Platform Services Controller, you can export support bundles for specific services or for specific products, depending on the node that you select in the vSphere Web Client. For more information, see [Export a Support Bundle](#).

Configuring the vCenter Server Appliance 6.0 by Using the Appliance Shell

You can edit some basic configuration settings in vCenter Server Appliance 6.0 by using the appliance shell. You can access the vCenter Server Appliance API commands and plug-ins for monitoring, troubleshooting, and configuring the appliance by using the appliance shell. For a full list of API commands and plug-ins in the vCenter Server Appliance shell, see the [vCenter Server Appliance Configuration](#) documentation.

Table 3. vCenter Server Appliance Shell API Commands and Plug-Ins Sample

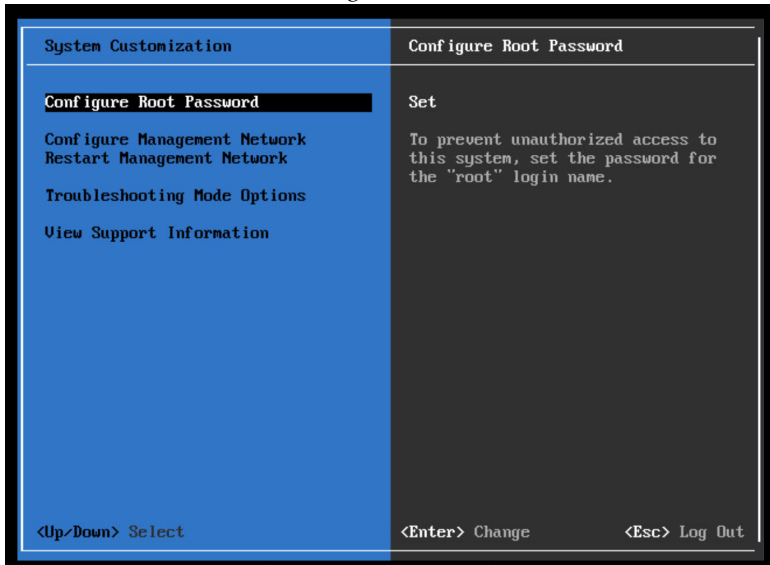
API Command	Description
<code>access.consolecli.set</code>	Set enabled state of console-based, controlled CLI (TTY1).
<code>access.dcu.set</code>	Set enabled state of the Direct Console User Interface (DCUI TTY2).
<code>access.shell.set</code>	Set enabled state of Bash shell, that is, access to Bash shell from within the controlled CLI.
<code>access.ssh.set</code>	Set enabled state of the SSH-based controlled CLI.
<code>localaccounts.user.add</code>	Create a local user account.
<code>localaccounts.user.delete</code>	Delete a local user account.
<code>localaccounts.user.get</code>	Get the local user account information.
<code>localaccounts.user.set</code>	Update local user account properties, such as role, full name, enabled status, and password.
<code>ntp.get</code>	Get NTP configuration settings. If you run the <code>timesync.get</code> command, you can retrieve the current time synchronization method (by using NTP or VMware Tools). The <code>ntp.get</code> command always returns the NTP server information, even when the time synchronization method is not set to NTP. If the time synchronization method is not set by using NTP, the NTP status is displayed as down.
<code>ntp.server.add</code>	Add NTP servers. This command adds NTP servers to the configuration. If the time synchronization is NTP-based, then NTP daemon is restarted to reload the new NTP servers. Otherwise, this command adds servers to the NTP configuration.
<code>ntp.server.delete</code>	Delete NTP servers. This command deletes NTP servers from the configuration. If the time synchronization mode is NTP-based, the NTP daemon is restarted to reload the new NTP configuration. Otherwise, this command just deletes servers from the NTP configuration.
<code>ntp.server.set</code>	Set NTP servers. This command deletes old NTP servers from the configuration and sets the input NTP servers in the configuration. If the time synchronization is set by using NTP, the NTP daemon is restarted to reload the new NTP configuration. Otherwise, this command just replaces the servers in the NTP configuration with the NTP servers that you provide as input data.
<code>resources.cpu.stats.get</code>	Get CPU statistics.
<code>resources.load.stats.get</code>	Get load averages (over 1, 5, and 15 minute intervals).
<code>resources.mem.stats.get</code>	Get memory statistics.
<code>resources.net.stats.get</code>	Get network statistics.
<code>resources.processes.stats.list</code>	Get statistics on all processes.
<code>resources.system.health.get</code>	Get the overall health of the system.
<code>services.restart</code>	Restart a service.
<code>services.stop</code>	Stop a service.
<code>timesync.set</code>	Set the time synchronization configuration.
<code>com.vmware.rvc</code>	Invoke Ruby vSphere Console that is an interactive, object-oriented CLI utility.

Table 3. vCenter Server Appliance Shell API Commands and Plug-Ins Sample

API Command	Description
<code>com.vmware.software-packages</code>	Use to patch and update the software packages in the appliance.
<code>com.vmware.vimtop</code>	Use to show a list of vSphere services and their resource usage.

Configuring the vCenter Server Appliance 6.0 by Using the Direct Console User Interface

After you deploy the vCenter Server Appliance, you can reconfigure the network settings and enable access to the Bash shell for troubleshooting.



- Restart the network of the vCenter Server Appliance to restore the network connection for troubleshooting purposes. For more information, see [Restart the Management Network of the vCenter Server Appliance](#).
- Export a vCenter Server Support Bundle for troubleshooting purposes. To export the support bundle of the vCenter Server instance in the vCenter Server Appliance for troubleshooting, go to: <https://appliance-fully-qualified-domain-name:443/appliance/support-bundle>.
- Enable local and remote access to the appliance Bash shell for troubleshooting purposes. For more information, see [Enable Access to the Appliance Bash shell](#).

If you have comments about this documentation, submit your feedback to: docfeedback@vmware.com

VMware, Inc. 3401 Hillview Ave., Palo Alto, CA 94304 www.vmware.com
Copyright © 2015 VMware, Inc. All rights reserved. [Copyright and trademark information](#)

Item: EN-001742-00