

VMware Skyline Advisor™ Pro

Expect the unexpected in your IT environment with the next level of proactive intelligence. Turn potential moments of failure into opportunities to shine.

BENEFITS



Proactively identify and prevent problems



Solve problems, not just symptoms



Increase security, reliability and productivity



PREVENT:

201

Downtime hours per year saved by IT professionals by using proactive, preventive and/or predictive support technologies.¹ (IDC)

50%

Of survey respondents reported a decrease in unplanned downtime in the 2 years after implementing proactive support technologies.¹ (IDC)

\$540K

Average cost of one hour of IT downtime for enterprises.² (Ponemon Institute)

RESULTS

Avoid problems before they occur. With just a few clicks, you can increase team productivity and the overall reliability of your VMware environments.

VMware Skyline Collector™

Automatically and securely collects product usage data and support log bundles.



95M

Identified objects with potential issues (66% remediated by 12K+ customers)

VMware Skyline™ Log Assist

Automatically (with your permission) uploads support log bundles to VMware Technical Support.



90K

Customer hours saved uploading logs in 2020



WHAT'S NEW



Faster

Accelerated data processing surfaces issues and inventory changes 12x faster



Smarter

End-of-life and historical insights; VMware Success 360™ customers receive a Proactive Insights Report



Easier

Redesigned UI/UX is simpler to use, and the REST API integrates Findings data with your tools

PRIVACY AND SECURITY



Skyline is SOC 2 and ISO 27001 certified and supports LDAPS for Active Directory authentication. Telemetry data is transferred to VMware over an encrypted channel and stored in a secure VMware repository in the U.S. operated by VMware.



Products Supported by Skyline:

- VMware vSphere®
- VMware NSX®
- VMware vSAN™
- VMware vRealize® Operations™
- VMware vRealize Automation™
- VMware Horizon®
- VMware Cloud Foundation™

Additionally, Skyline identifies VxRail and VMware Validated Design™ solution deployments.

Get started today
skyline.vmware.com/get-started

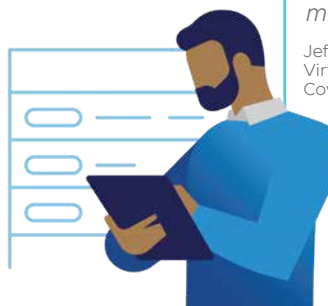
"VMware Skyline is like having a second set of professional eyes looking over your estate and letting you know that all is good."

Richard Harris
 Virtualization Engineer IV
 Rackspace



"Since deploying Skyline, we have not had any major VMware outages."

Jeff Obranovich
 Virtualization Systems Engineer
 Covenant Logistics



1. IDC Technology Spotlight, sponsored by VMware, The Evolution and Integration of Cloud System Management Software with Support, doc #US47484721, March 2021
 2. Ponemon Institute: "Cost of Data Center Outages" 2016 Research Report, sponsored by Vertiv