

# VMware Cloud Foundation Edge

The platform for modernizing your edge infrastructure

Edge computing offers compelling benefits, but the challenges of deploying an edge infrastructure can make it a bit of a double-edged sword.

That's where VMware Cloud Foundation™ Edge comes in.

## Organizations are embracing the edge

To fuel growth and innovation, today's organizations need to unlock the insights hidden within their data as quickly as possible. Edge computing helps enable this by bringing compute, storage and networking closer to the data sources, providing a host of benefits:



- ✓ Reduced latency
- ✓ Improved compliance and data sovereignty
- ✓ Lower cost of bandwidth
- ✓ Minimal operational downtime
- ✓ Enhanced scalability

Because of these benefits, edge infrastructure investments are growing exponentially.



Nearly **\$350 billion** expected worldwide spending on edge computing by 2027<sup>1</sup>

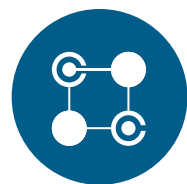


By 2027, total edge spend is expected to grow to **\$55 billion** at a CAGR of 16.8%, representing around 25% of the total enterprise infrastructure market.<sup>2</sup>

That said, deploying an edge infrastructure isn't always easy.

## Edge infrastructure deployment can be challenging

While your organization might be eager to adopt an edge solution, you'll need to consider a number of challenges that could get in the way:



**Incompatible infrastructure and skill gaps**

Will the solution work with what you've got?



**Operational overhead and complexity**

Will the solution reduce complexity or add to it?



**Security and compliance**

Does the solution meet your specific security requirements?



**Infrastructure downtime**

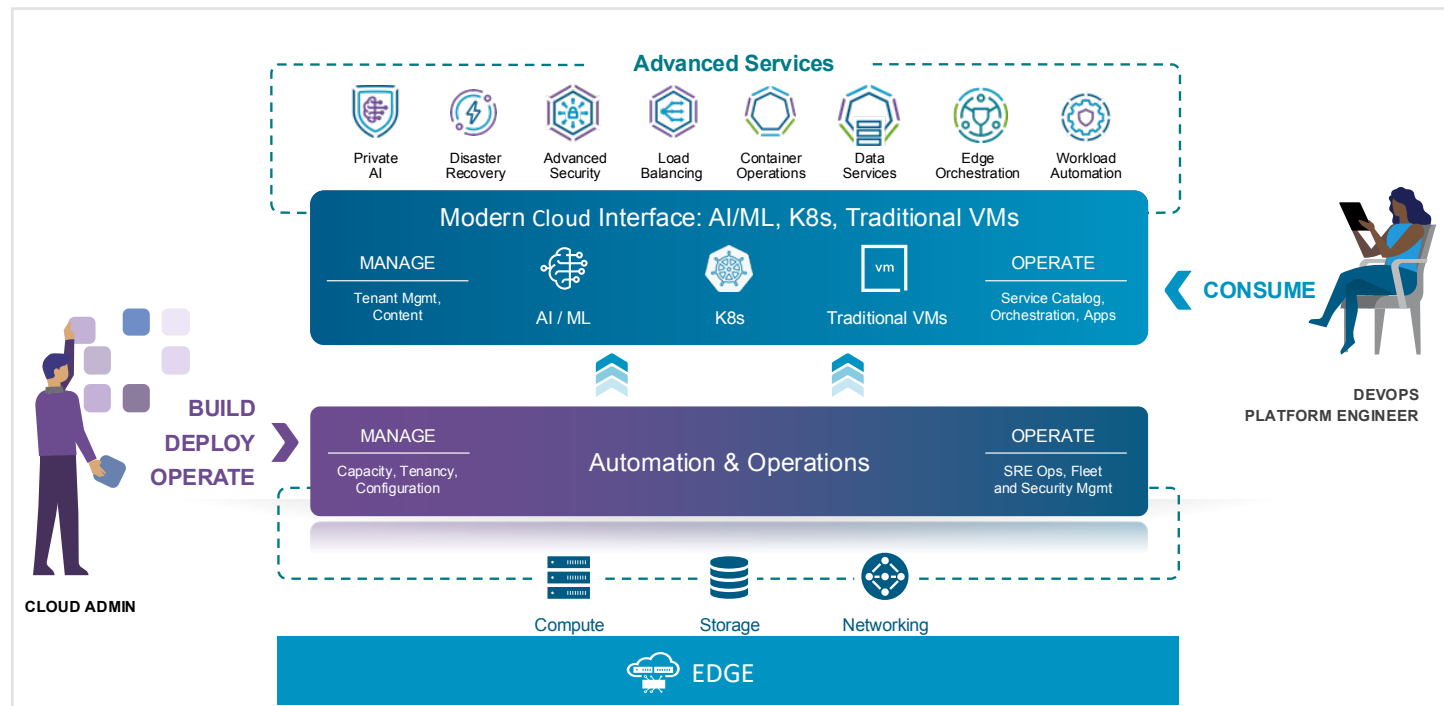
Will the solution be reliable and run without any business disruption?



To overcome these challenges, you need a flexible, scalable, turnkey solution. Enter VMware Cloud Foundation Edge.

## Take the simple path to the edge

An optimized configuration of the industry-leading VMware Cloud Foundation platform specifically tailored for edge use cases, VMware Cloud Foundation Edge is scalable, flexible and easy to deploy and manage.



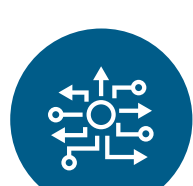
Here are 5 key differentiators of VMware Cloud Foundation Edge:

- Enterprise-ready infrastructure**
  - Out-of-the-box compute, storage, networking and management.
  - Built-in security with high performance and availability.
- Unmatched flexibility and scalability**
  - Start small and scale up or down as needed.
  - Choose to deploy full-stack or individual components.
- Automated deployment and lifecycle management**
  - No need to maintain technical personnel on edge sites.
- Consistent and familiar platform**
  - Consistent infrastructure reduces complexity and seamlessly integrates edge sites.
  - Consistent operations across edge, data center and cloud help minimize skill-gaps.
- Unified operations and management**
  - A unified operations layer helps streamline operations.
  - Flexibility to use VMware vCenter® or VCF Operations based on your needs.



## Unlock powerful use cases

VMware Cloud Foundation Edge can enable a variety of use cases across industries.



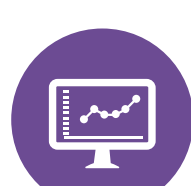
**Infrastructure extension**

- Remote branch offices/ fulfillment centers
- Virtual desktop infrastructure (VDI)
- Offline locations with intermittent network connectivity



**Artificial intelligence**

- AI customer service agents
- Automated preventive maintenance
- Adaptive learning/ smart cities



**Real-time analytics**

- Fraud detection
- Autonomous vehicles
- Financial trading apps



**Industrial IoT**

- Automated inspection
- Supply chain management
- Inventory management



**Content delivery**

- Streaming services
- Online gaming
- AR and VR content delivery

## Get started today

Learn more about how VMware Cloud Foundation Edge can help drive growth for your organization at [vmware.com/products/cloud-infrastructure/vmware-cloud-foundation](https://www.vmware.com/products/cloud-infrastructure/vmware-cloud-foundation).

1. IDC. Press Release: "New IDC Spending Guide Forecasts Edge Computing Investments Will Reach \$232 Billion in 2024." March 2024.

2. IDC. "Worldwide Edge Enterprise Infrastructure Forecast, 2023–2027: AI Driving Investment." Max Pepper, Jennifer Cooke, Kuba Stolarski, November 2023. (Doc #US51313923)